

The University of Iowa
Marvin A. and Rose Lee Pomerantz
Career Center

Positive Impact

2014-2015 Annual Report

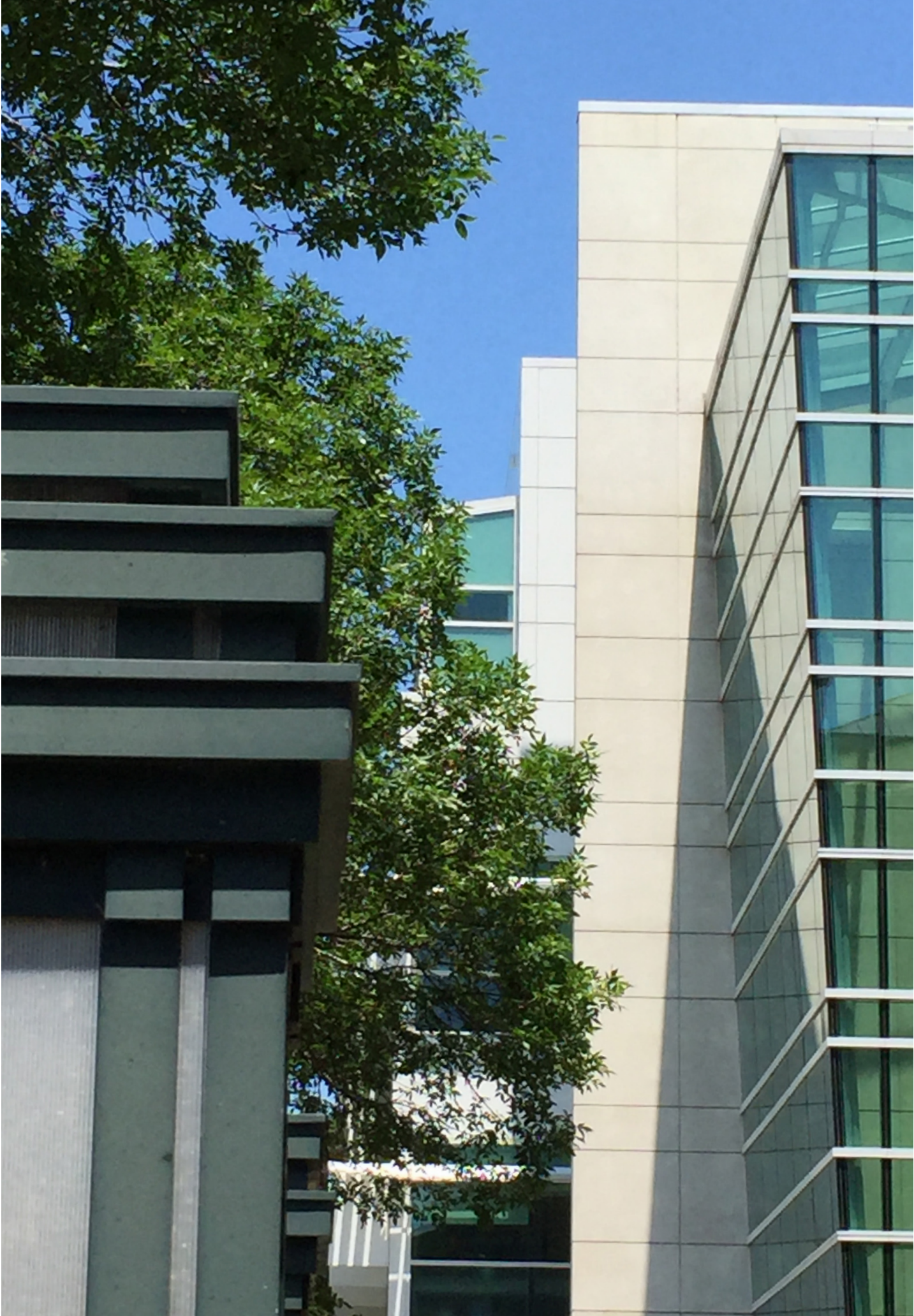


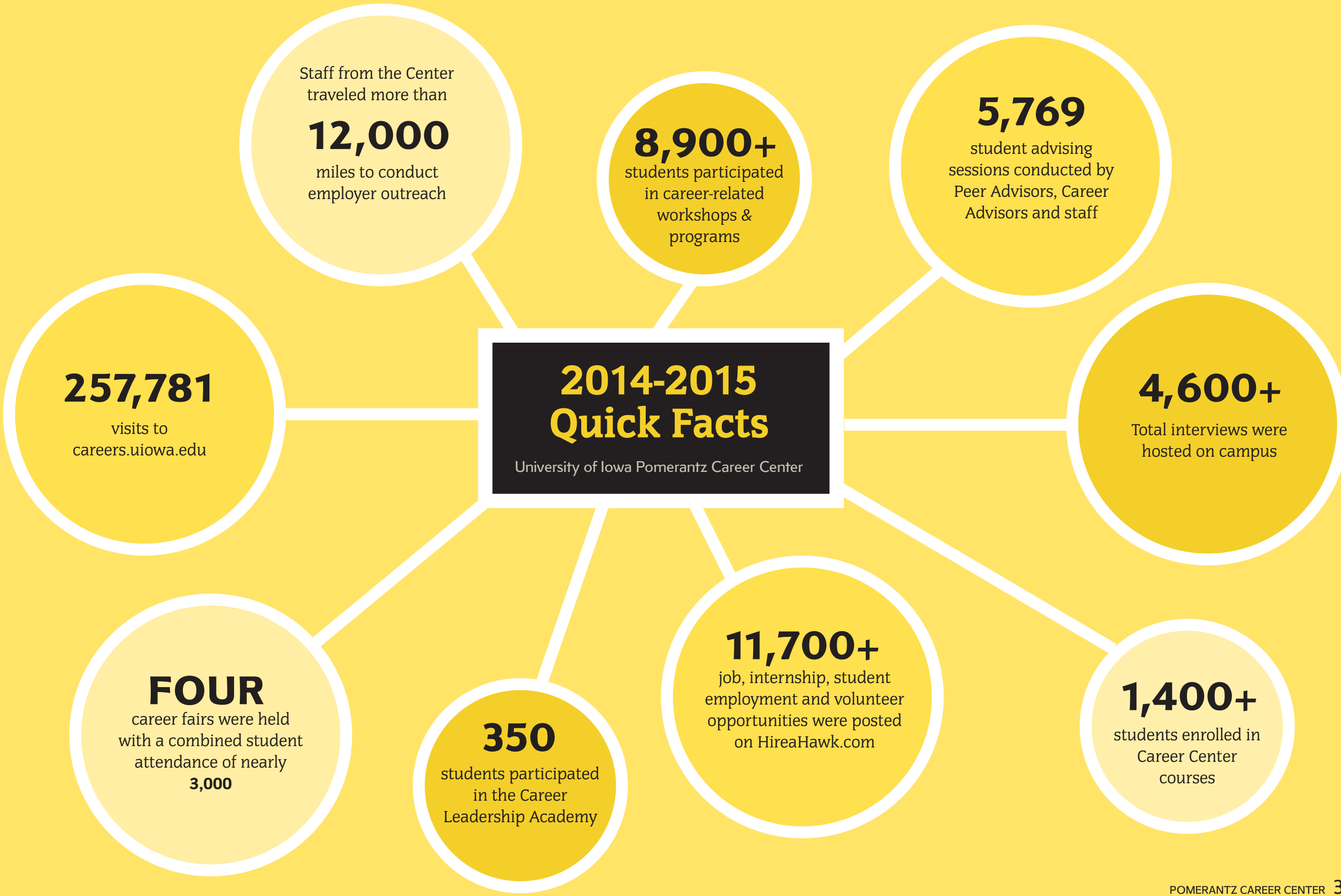
Table of Contents

- 2 Mission Statement
- 4 UI Student Facts
- 5 Career Advancement
- 8 Experiential Education
- 9 Top Internship Sites
- 10 Community Involvement
- 11 Dual Career Services
- 12 Academic and Leadership Programs
- 16 Corporate and Community Relations
- 17 Employer Relations and Events
- 17 Employer Relations Program Participants
- 19 Recruiting Statistics
- 20 2014-2015 Annual Graduate Survey
- 23 Fortune 500 Companies

Mission Statement

Pomerantz Career Center assists The University of Iowa with enrollment management by empowering undergraduate students to become leaders, maximize their potential and achieve professional success. We accomplish this through professional advising, innovative and experiential education and the development of extraordinary relationships with our stakeholders.







University of Iowa Students

Fall 2014 Enrollment Data for Undergraduates
from Colleges of Liberal Arts and Sciences (CLAS),
Education, Nursing, Engineering and Tippie
College of Business: UI Registrar (Fall 2014)

www.registrar.uiowa.edu

	College of Business	College of Education	College of Engineering	College of Liberal Arts & Sciences	College of Nursing
GENDER					
Men	1,319	54	1,785	7,361	31
Women	879	246	538	9,140	519
Transgender	1	-	-	9	250
ORIGIN					
Resident of Iowa	943	-	1,083	9,193	344
Non-resident of Iowa	1,256	-	1,240	7,317	206
ETHNICITY					
American Indian or Native Alaskan	2	-	1	27	-
African American	29	3	55	525	3
Hispanic	79	26	131	1,112	21
Asian	51	5	98	521	7
2 or More	32	6	59	400	7
Native Hawaiian or Pacific Islander	1	-	5	20	2
Total Minority	194	40	349	2605	40
Foreign	562	1	169	1,718	5
STUDENTS WITH DISABILITIES					
					TOTAL: 631

Career Advancement

One of the most important services the Center provides to students is advising and programming on a range of topics, including major exploration, job and internship search, salary negotiation, graduate school application and networking, to name a few. Over 5,700 students utilized these sessions during the year, and over 8,900 students attended workshops and sessions presented by staff and Career Peer Advisors in classrooms, club meetings and other events.

Advising

Walk-in sessions and internship/program/
career advising appointments
from Aug 1, 2014-July 15,, 2015

5,769

total advising
appointments

3,824

scheduled
appointments
(Career Advisors)

1,945

walk-in sessions

Programs Presented

from Aug 1, 2014-July 15, 2015

344

total programs
presented

8,915

attendees

270

programs presented
by Career Advisors
(7,741 attendees)

74

programs presented
by Peer Advisors
(1,174 attendees)

From the Center's
exit survey of advisees
(39% response rate):

99.5% of students reported their
primary needs were met during
advising or walk-in advising.

99.3% of students would
recommend Pomerantz Career
Center to a friend.

Most students reported feeling
confused or overwhelmed before
their appointment and confident
or informed following their
appointment.



Rachel Brailov

ELEMENTARY EDUCATION, MAY 2015

"The Career Center is the best resource on campus to help students achieve their future career goals. The staff is very personable and knowledgeable when it comes to advising students of all different majors. Mock interviews are a great resource to authentically practice the interview process for your specific field. The experience and feedback from this event, along with the Career Center advisors and services, greatly impacted my success in finding a job after college."

Student Feedback on Career Advising:

"(She) was wonderful, increased my confidence in my resume and gave incredibly helpful constructive criticisms. **Very impressed** and glad I made an appointment!"

"She was very helpful and really **listened** to my needs and concerns and answered them fully."

"I literally got the **best advice** throughout my college career from her. She's amazing."

"I feel a lot more **capable** now of finding a good job for myself than I did when I came in. Thank you!"

"Both times I have come to the career center, it has been informative and **exceptional** in terms of helpfulness."

"She read me like a book and gave me **great advice** on how to get back on track. This appointment was not only helpful, but enjoyable."

"Every time I come in here (PCC), I get the exact help I need. I've now met with more than one advisor, and they've helped me discover **a more clear path** to what I need to accomplish."

Student Feedback on Peer Advisors:

"He helped me finalize my resume and cover letter and gave tips for both of them that I would have overlooked on my own. He was very helpful and had a positive attitude. All in all very great advice—**glad that I went.**"

"This is **great service** for students who do not know to write a resume."

"Personally, I had an amazing first-time experience here and will be coming back **often** with any questions."

"She gave me suggestions on how to improve my resume and provided feedback on what I was doing well. She also told me about things to include in order to stand out as I apply for a business school position. This was **valuable** since she is a student within Tippie. She was overall very helpful, professional and encouraging."

"I've only had **great experiences** all of the times I have come here."





Career Series for International Students:

Each fall and spring, the center does a series of programs to help students who are new to the United States and the UI campus to prepare for their job and internship search.

Topics included:

- Competitive Resumes & Cover Letters
- Prepare for the Job & Internship Fair
- Interviewing to Impress
- Job & Internship Search Strategies
 - Career Exploration
 - Networking & Self-Marketing Skills
- Work Visa Options After Graduation
- Considering and Applying to Grad Schools

13

total programs

274

total attendance

Special Programs and Services

The Career Center strives to adapt to the changing needs of the students on campus to continually help them reach their career goals.

Find Your Focus Program:

This program can help undecided students through the states of choosing a career that connects with a major on campus through appointments and self-guided activities.

134

total appointments

66

unique student participants



Experiential Education

An internship or other experiential opportunity is one of the most important activities students can participate in to prepare for a successful transition to the workplace. These activities enable participants to apply what they learn in the classroom in a real-world environment.

The Pomerantz Career Center coordinates the following program and services to help students get recognition for their internships:

Zero-Credit Internship Registration:
This offering allows students to have an official notation on their UI transcript recognizing their internships.



692
Internships recorded
in 2014-2015

2014-2015 Internship Data				
Semester	Online Survey	Zero-Credit	Credit	TOTAL
Fall 2014	48	62	41	151
Spring 2015	38	92	54	184
Summer 2015	144	144	69	357
TOTAL	230	298	164	692
		From HireaHawk.com	From MyUI	

Willie Tan, Intern at the UI of Office of Sustainability.



Top Internship Sites 2014-2015

ACT
Abbvie
Accenture CIO
AEGON USA Investment
Management, LLC
Alliant Energy
Amana Pharmacy
Apple
AT&T
Augustana College
BCBG Max Azria
Boston Scientific Corporation
Bravo Sports Marketing
BuzzFeed, Inc.
Cedar Rapids Independent Film
Festival
Centers for Disease Control and
Prevention
City High School
Coalition For The Homeless
College Pro Painters
ConAgra Foods, Inc.
Coyote Logistics
Deloitte LLP
Des Moines Symphony

Disney
Domestic Violence
Intervention Program
Dubuque Symphony Orchestra
DuPont Pioneer
Elizabeth Riesz
Enterprise Rent-a-Car/
Chicagoland
Epic
Ernst & Young LLP
Fastenal Company
FDA
Ford Motor Company
Four Oaks
GEICO
Gender, Women's, and Sexuality
Studies Department
General Electric Global Research
Goodfellow Printing Company
Hawkeye Hotels
Hawkins Wealth Management
Hills Bank and Trust Company
HNI Corporation
Hy-Vee
IBM

Indiana Pacers
Industrial and Commercial Bank
of China Ltd., New York Branch
Integrated DNA Technologies
Iowa City Community School
District
Iowa City UNESCO City of
Literature
Iowa City West High School
Iowa Governor's Office
Iowa Public Television
Iowa Senate Democratic Research
Staff
Iowa United Nations Association
Iowa Youth Writing Project
isportsweb.com
John Deere
Kansas City Chiefs
KCCI-TV
Kirkwood Community College
Kohler Co.
Kyle H. McWilliams
Little Village Magazine
Live Nation
Macbride Raptor Center

Mallinckrodt Pharmaceuticals
Marion Music Academy
Mayo Clinic
MercyCare Community
Physicians: Business Health
Solutions
MidAmerican Energy
MidWestOne Bank
Modine Manufacturing Company
Monster Energy
Morgan Stanley
National Conference of Bar
Examiners
National Science Foundation
Niabi Zoo
Nike
Northwestern Memorial Lake
Forest Hospital
Office of the Vice President
for Research & Economic
Development
O'Neill Theatre Center
Orchestra Iowa
Pearson
Pella Corporation

Polk County Records Office
PricewaterhouseCoopers
Principal Financial Group
ProofreadingPal LLC
Pyramid Atlantic Art Center
Quad City Symphony Orchestra
Robert Half International/
Accountemps
Rockwell Collins
RSM
Rush University Medical Center
Skogman Realty
Southwest Airlines
Spectro Scientific
St. Ambrose University
Summer of the Arts
Systems Unlimited Inc.
Tanager Place
Target Stores
TaxACT
The Englert Theatre
The University of Iowa Athletic
Department
The University of Iowa Student
Health & Wellness

The University of Oklahoma
The University of Tennessee
Towers Watson
Transamerica
Travelers Insurance Company
University of Iowa
University of Iowa-Hancher
University of Iowa Hospitals and
Clinics
University of Iowa-Orientation
Services
University of Iowa Special
Collections
U.S. Department of Education
U.S. Food and Drug
Administration
U.S. Senator Chuck Grassley
U.S. Small Business Administration
Virtual Systems Engineering
Warner Music Group
Washington University in St Louis
White Ladder Decorating
YMCA of Marshalltown, IA



Community Involvement

Students across campus spend time getting experience and assisting community organizations by volunteering in service-oriented programs and services throughout the Iowa City/Cedar Rapids corridor area.

Related activities from the community Involvement Log: Aug 1, 2014-July 31, 2015

Hosted at HireaHawk.com

Total
Involvement

48,319
TOTAL HOURS

6,565
ENTRIES

Philanthropy

1,990
TOTAL HOURS

498
ENTRIES

Volunteering

44,298
TOTAL HOURS

5,940
ENTRIES

Alternative
Spring Break

816
TOTAL HOURS

35
ENTRIES

Service-Learning
Course

1,215
TOTAL HOURS

92
ENTRIES

Volunteer and Service Site Examples:

Bickford Senior Living

Black Girls Do Science

Crohn's & Colitis Foundation

Children's Center for Therapy

Combined Efforts Theater

Feeding America

Friends of Hickory Hill Park

Floodwater Festival

Grant Wood Elementary

Hope Lodge

Iowa City Free Lunch Program

Iowa DNR

Iowa Children's Museum

Johnson County Crisis Center

Make-a-Wish Foundation

Mercy Hospital

Old Brick

Ponseti Races

UI Powwow

UIHC Ophthalmology Dept.

Soccer without Borders

Warrior Challenge

Women's Heart Association

Student Response about their Community Involvement Experiences:

"There are many people in this world who have nothing, yet they are happy to be able to spend one night in a warm place and eat a good meal. While serving these people and being in their presence, it reminded me to not take anything for granted and **be grateful** for all that I have." —Anonymous

"I learned that it is not about your own accomplishments, but working to give others a **greater opportunity** to succeed." —Eric

"This opportunity has helped me decide on my future career with elementary education. Also, it has been really interesting meeting so many kids from other countries who speak many languages. While I may have helped teach them things within the classroom, they have **opened my eyes** to the wide range of diversity we have in Iowa City." —Madeline

"I have learned how to be a leader in many respects: effective public speaking, networking throughout the community and learning how to listen. **Listening** is the key to true leadership. Everyone's voice is important. Everyone matters." —Mary



Dual Career Services

The University of Iowa provides job search assistance to accompanying partners of faculty and staff. Accompanying partners of UI faculty and staff receive job search related services until they secure employment or for up to one year. (Results are for 2015)

29

of the accompanying partners were successfully employed in 2015, 30 continued services into 2016

Of those:

26 (44%) of the DCS clients were the accompanying partner of a faculty member

30 (51%) were the accompanying partner of a staff member

3 (5%) were designated as "other"

14 limited-service appointments were provided to individuals who did not meet the criteria for full service

Appointments held with **31** prospective candidates by referral from departments on campus

Academic and Leadership Programs

Hundreds of students at the University of Iowa enroll each semester in more than 20 different courses offered through Pomerantz Career Center as well as a certificate in Leadership Studies.

The center is continually working to adapt and add new courses to better prepare students for their career after college—be it entering graduate school or the workplace. These courses offer students an opportunity to oftentimes interact with professionals from the community and beyond to learn about career paths and networking. Students take courses under the departments of Leadership Studies (LS) or Career Center Programs (CCP).

204

students have earned the Certificate in Leadership Studies since it began Fall 2010

Fall '14 - Summer '15 Course Enrollment

Course	F '14	Sp '15	Su '15	Total
Job Search Strategies	105	49	28	182
Career Exploration	55	81	NA	136
The Washington Center	4	1	13	18
Communication for the Workplace	22	24	NA	46
Office Etiquette	47	25	NA	72
Successful Teamwork	28	28	NA	56
Suit Camp	32	32	NA	64
Social Media for the Job Search	48	55	38	141
Advanced Job Search Skills	0	44	NA	44
Moneywise	0	0	NA	0
Strengths-Based Leadership	17	0	NA	17
Culturally Intelligent Leadership	12	8	NA	20
Graduate Admissions 101	30	26	NA	56
Perspectives on Leadership	29	20	NA	49
Career Leadership Academy Phase 1	36	0	NA	36
Career Leadership Academy Phase 2	42	30	NA	72
Career Leadership Academy Phase 1 & 2	89	59	NA	148
Career Leadership Academy Phase 3	9	0	NA	9
Career Leadership Academy Phase 3 & 4	48	43	NA	91
Career Leadership Academy Phase 4	17	11	NA	28
Leadership Community Seminar	25	0	NA	25
Academic Internship	16	41	47	104
Leadership Certificate Internship	2	5	9	16

TOTAL ENROLLMENT 1,430

* Data is from registrations in MAUI



Yuchen Xie

HEALTH PROMOTION, MAY 2015

“I started to explore the Career Center when I took ‘Graduate Admissions’ provided by a career advisor. The class broke down the overwhelming application process into feasible steps to reach the final goal. My instructor, who is a career advisor, helped me a lot; she referred me to various resources I can use in the Career Center. The career advisors provided concrete and useful feedback on my personal statement, helped me polish my resume, and answered any questions I had. This semester, I cannot believe that I have received an acceptance letter from the largest school of public health in the world, Johns Hopkins University. The Career Center helped me be a successful candidate for grad school.”

Academic Course Highlights

STATISTICS:

Professional Development Courses:

Upon completing the Communication in the Workplace Course, **93% of students were able to explain how both verbal and written communication can be interpreted in the workplace.**

Upon completing the Successful Teamwork for the Workplace Course, **100%** of students were able to define what it means to be globally minded in the workplace.

Advanced Job Search Skills:

99.7% of students were able to identify and state their careers goals, strategies and action steps

99.7% of students were able to prepare materials that support their job search target

92% of job seekers had jobs/internships within 4 months of completing the Spring 2015 class

Career Exploration:

96% of students were able to identify past and current academic and career interests

91% of students were able to evaluate how majors and occupations fit with interests, abilities and values through major and occupational research

98% of students were able to synthesize personal academic and occupational information by developing an academic and career plan



Quotes from Students:

"Of all my 5 years of school, I have never gained so much from a single course. Taking this course was such a great thing to do, and I am so **shocked** as to how much it impacted my whole life."
(Successful Teamwork for the Workplace)

"This course showed me how to effectively use my strengths within groups but **also showed me** what I needed to work on as an individual."
(Strengths-Based Leadership)

Career Leadership Academy

One of the courses and programs the Center offers is the Career Leadership Academy, where through service-learning projects, group projects, networking opportunities and classroom work, students prepare to be successful leaders both on campus and in their own careers.

Participation: 384 students

These students represent 35 different majors represented total in the program

Top 5 Majors:

- Finance
- Business
- Communication Studies
- Journalism and Mass Communication
- Psychology

24% of CLA participants were International and minority students

1,002—Total Number of CLA Alumni who have completed the entire program since program inception in January 2007

CLA graduates work in hundreds of different fields across the country. CLA graduates are becoming everything from lawyers, doctors or teachers to account managers and entrepreneurs.



Sampling of Organizations where CLA Graduates Work

Acquity Group

American Academy of Pediatrics

American Cancer Society

Ameriprise

Bloomberg LP

C.H. Robinson Worldwide LLC

Cerner Corporation

Coyote Logistics

ConAgra Foods

Denver Area School District

Google

Hy-Vee

John Deere

Learfield Sports

Merrill Lynch

Northwestern Mutual

PriceWaterhouseCoopers

RAPP China

Rockwell Collins

State Farm

Target

University of Iowa Hospitals and Clinics

U.S. Bank

... and many, many more!

Career Leadership Academy

Learning Outcome Results Sampling

96% of students can articulate at least one skill associated with effective leadership

93% of students agreed that they improved their ability to verbally communicate clearly and concisely

97% of students can help identify a common goal in group work was a result of the service project work

100% of students believe they can help groups work towards a common goal

87% of students felt they could apply their personal brand to anything related to the job search

SERVICE PROJECTS AND COMMUNITY PARTNERS AIDED IN CAREER LEADERSHIP ACADEMY COURSES

Fall 2014: Table to Table, Hope Lodge of Iowa City and Rape Victim Advocacy Program of Iowa City

Spring 2015: Big Brothers Big Sisters, Uptown Bill's Keeping the Dream Alive Foundation and Rape Victim Advocacy Program of Iowa City

96%

of students learned to discuss their transferrable skills in an interview setting



Most Impactful Thing Students Learned

"The most impactful thing that I learned consisted of how to give back in the community and how to **manage my financials** for the upcoming years."

"How to lead with the tools that you already have. You need to **embrace who you are** and lead in a way that appropriately represents you."

"The most impactful thing that I learned was job searching skills, because I have not had to begin doing that yet. **I now know** a lot of places to do so, what to look for and how to prepare for the interview."

"The most important skill I developed is the ability to have professional 'networking' conversations. I feel **confident enough in my abilities** to strike up conversations or make the first interaction with individuals I probably would not have before CLA."

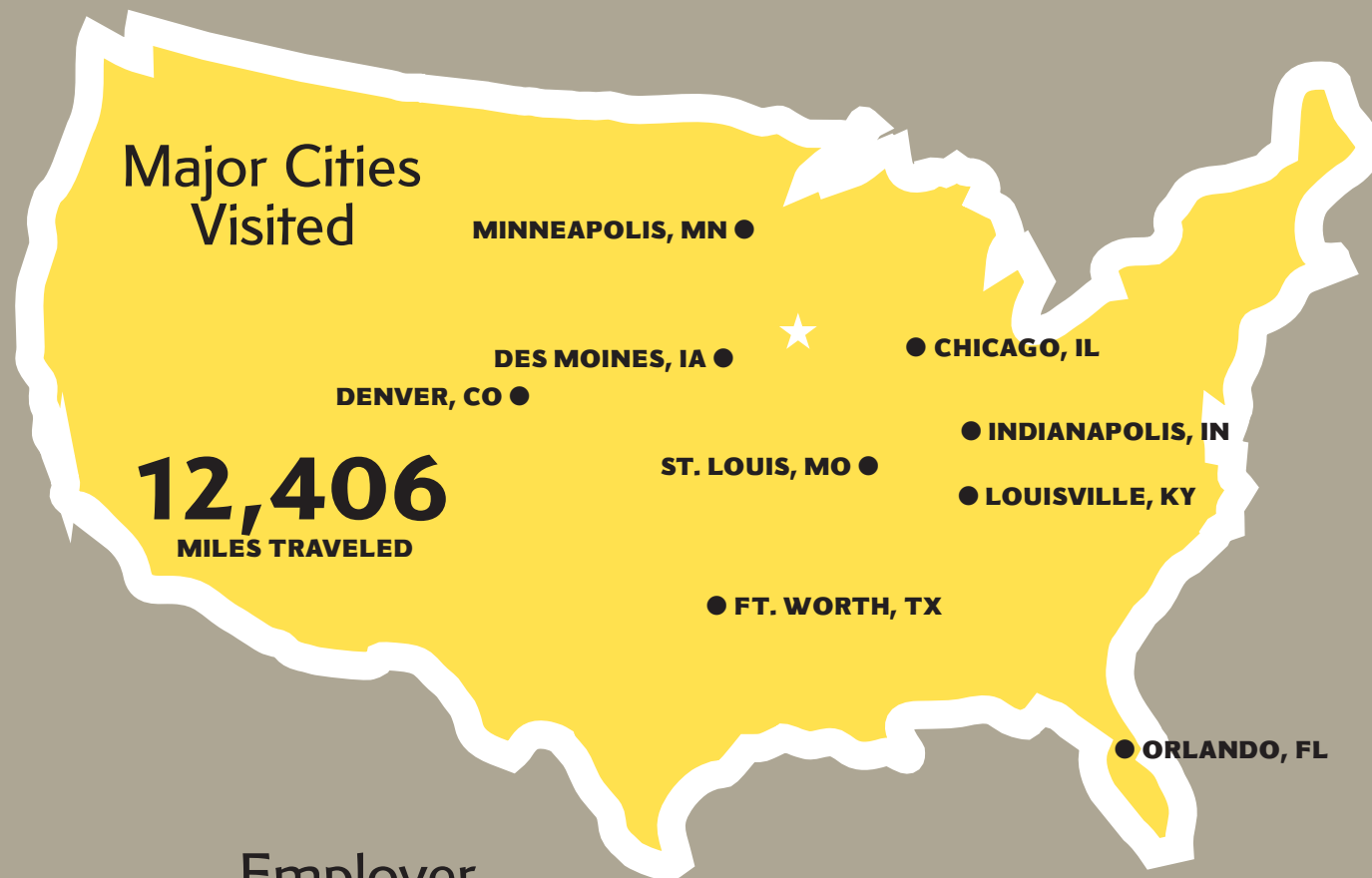
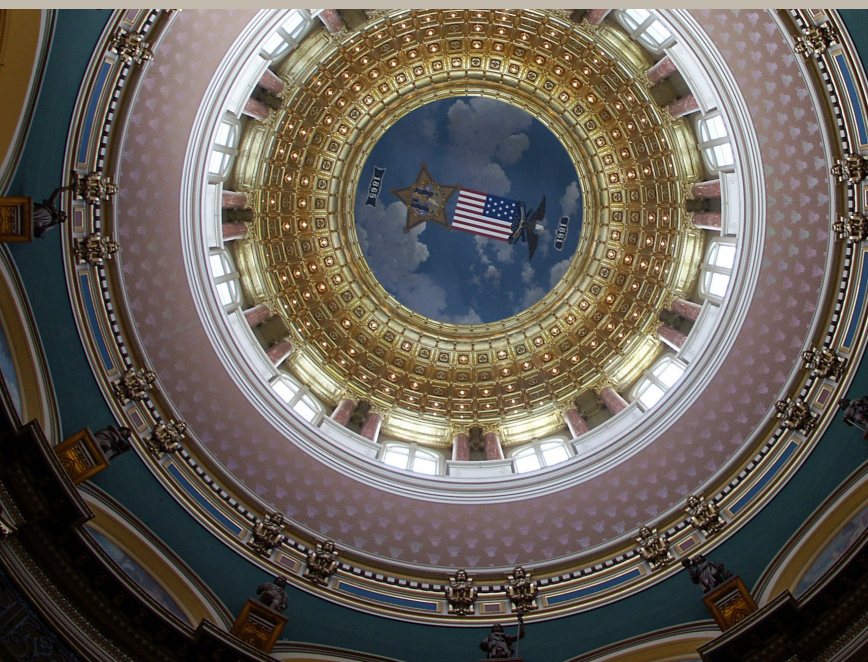
"I was able to realize that there are many different types of leaders and I am a leader in my own way. **I never thought of myself as a leader before this class.** I had a set idea of what a leader looks like and how they act, but this class made me realize there are so many different kinds of leaders."



Corporate and Community Relations

Pomerantz Career Center is committed to sustaining and developing relationships with an array of organizations across the country to develop internship and full-time opportunities for UI graduates and students.

These partnerships also benefit organizations by finding talented individuals to help them reach their recruitment goals. The Center works with both non-profit and for-profit organizations of all sizes and regions.



Employer Outreach

165

**BUSINESS/ORGANIZATIONS
VISITED**

Including: Organizations of
all sizes, start-ups,
Government Agencies,
non-profit and for-profits

Community Outreach

68

COMMUNITY EVENTS

Types of events include:
Chamber Events, Networking
Events, Human Resources
Meetings and Conferences,
Regional and Workforce Round
Tables, Employment Panels,
Start-Up Events and
Regional Workforce
Events



Elizabeth Perez

FINANCE, MAY 2015

“The Career Center was extremely useful during my time at the University of Iowa. From resume building to mock interviewing to career advising, the services helped me develop my professional skills that ultimately landed me an internship and then a full-time job.”

Employer Relations and Events

Through on-campus interviews, mock interviews, career fairs and other campus activities, employers and UI students are able to connect and discuss future opportunities.

2014-2015 On-Campus Recruiting Statistics

4,639

On-Campus Interviews
(Includes Full-time/
Internships/Mock
Interviews and College of
Law interviews)

11,748

Jobs, Internships and
Student Employment
Opportunities
Posted on
HireaHawk.com (2015)



400

Employers Recruiting
On Campus
(Includes Career Fairs/
On-Campus Interviews/
Events)

Employer Relations Program Participants

Organizations that have participated in Career Fairs, On-Campus Interviewing and/or Mock Interviews in 2014-2015

3M Company
Academia.edu
Academy for Urban School
Leadership
AccessDubuqueJobs.com
Ace Hardware Corporation
ACT
Advanced Disposal
Advanced Technologies Group (ATG)
Aerotek
Affordable Buckets
Aflac
Aflac Global Investors
AFN (Advantage Freight Network)
Alburnett Community School District
Alcon Labs
Aldi
Alliant Energy
Allianz Life
American Junior Golf Association
American Marketing & Publishing
American Ordnance LLC
AmeriCorps NCCC
Andersen Windows & Doors & EMCO
Anderson Bogert
Ankeny Community School District
Aon Hewitt
Apex Systems
AppleTree Children's Center
Applied Predictive Technologies
Archer Daniels Midland Company
AroundCampus Group, The
ASC Communication, Inc.
ASPIRA Charter Schools
Assurant Health

Athene (Formerly Aviva)
AUSL Chicago Teacher Residency
AXA Advisors

Bankers Trust
BASF
Bazooka Farmstar
berganKDV
Berkley Technology Services
Berkshire Hathaway Homestate
Companies
Biotech Pharmaceuticals Corp.
BITCO
BKD, LLP (Formerly Wolf & Co)
Blain's Farm & Fleet
BMM Transportation
BMO Harris Bank
Board of Educational Examiners
Boehringer-Ingelheim Vetmedica
Boom Lab
Brooksource
Brownells, Inc.
Buckle, Inc.
Burlington Community Schools
Businessolver

C.H. Robinson
Calamos Investments
Cambridge Investment Research,
Inc.
Camp Adventure Child and Youth
Services
Camp Starlight
Cargill
Carousel Motors

Caterpillar Inc.
CBE Companies
CBRE
CDS Global
CDW Corporation
Cedar Rapids Metro
Cedar Rapids School District
Central Bancshares, Inc.
Central States Group
Centro, Inc.
Cerner Corporation
Chem Station Chicago
Chicago Apartment Finders
CIGNA Corporation
City Year
CIVCO Medical Solutions
Clear Creek Amana CSD
Cleveland Metropolitan School
District
Clifton Larson Allen
CNA Insurance
College Community Schools
College Possible
College Pro Painters
Colony Brands Inc.
Community High School District
#99
Community High School District
#155
Community Unit School District
#308
ConAgra Foods, Inc.
Cook, Inc.
Coralville Marriott Hotel and
Conference Center

Cottingham & Butler
Council Bluffs Community School
District
COUNTRY Financial
Coyote Logistics
CRST
CUNA Mutual Group

Davenport Community School
District
Davenport Public Library
Deere Employees Credit Union
Deloitte LLP
Des Moines Public Schools
Des Plaines Office Equipment
Dupaco Community Credit Union
DuPont
Dynamite Ag

E4E Solutions
Eaton Corporation
Echo Global Logistics & Command
Transportation
Effner Financial Group -
Northwestern Mutual Financial
Network
EKS&H
EMC Insurance Companies
Emerson Process Management/
Fisher
Encompass Insurance Company
Enterprise Rent-A-Car - Heartland
and Chicago
Entertainment Cruises
Epic

Ernst & Young
Ethos Group

FactSet Research Systems
Family Heritage
Fast Enterprises
Fastenal Company
Federal Bureau of Investigation
Federal Deposit Insurance
Corporation (FDIC)
Federal Home Loan Bank of Des
Moines
Federal-Mogul Corporation
Federated Mutual Insurance
Company
FedEx Ground
Fidelity & Guaranty Life
Fidelity Investments
Financial Architects
First National Bank of Omaha
Ford Motor Credit Company
Four Oaks
Frontier Natural Products
FTI Lender Services
FullCount

Galapagos Charter Schools
G-Corps Urban Education Fellowship
GE Capital
GEICO
General Dynamics IT

Continued >>



Employer Relations Program Participants *Continued*

General Electric
General Mills-MN
Global Zero
GNP Company
GoDaddy
Gordmans
Grassroots Campaigns
GreatAmerica Financial Services
Greater Cedar Valley Alliance & Chamber
Greater Des Moines Partnership
Grinnell Mutual Reinsurance Company
Group O
GROWMARK
Gundersen Health System

Harmony Public Schools
Hawkeye Brokerage Center
Hawkeye Hotels
Hawkins Wealth Management
Hawthorne Direct
HDI-Gerling America Insurance Company
Hennepin County
Herbert Hoover Presidential Library and Museum
HERE a Nokia Company
HIBU
Hills Bank and Trust Company
HJ Heinz Muscatine
HNI Corporation
Holmes Murphy & Associates
Honeywell
Honkamp, Krueger, & Co
Hoopis Financial Group a general agency of MassMutual
Hormel Foods Corporation
Hy-Vee, Inc.

IAC Group
IBM
ICONIQ Capital

Insight Global, Inc.
Integrated DNA Technologies
International Paper, Cedar River Mill
Iowa 80 Group
Iowa Children's Museum
Iowa City Community School District
Iowa City Regina
Iowa City VA Health Care Systems
Iowa Department of Corrections
Iowa Department of Transportation
Iowa Valley
IowaArt

Jimmy Johns Gourmet Sandwiches
John Deere

Kansas Department of Transportation
Keyot
Kinze Manufacturing, Inc.
KJWW Engineering Consultants
Kohl's Department Stores
Kohler Co.
KONE
KPMG LLP
Kum & Go
Kunkel & Associates, Inc.
Kwik Trip, Inc.

Latta, Harris, Hanon, & Penningroth, LLP
LEARN Charter Schools Network
Lee Enterprises
Leepfrog Technologies
LightEdge Solutions
LimoLink, Inc.
Lincoln Financial Group
Lower Kuskokwin School District
LRS Consulting Services

Maine TWP HS District 207
Marco, Inc.
Marsh and Mercer

Marshalltown Company
MassMutual Iowa
MassMutual- Minneapolis Financial Group
Maudience
Maurice Sporting Goods
MB Financial Bank
McAdam Financial Group
McGrath Automotive Group
McGraw-Hill Education
Mead Johnson Nutrition
Mediacom
Medix Staffing Solutions, Inc.
Menards, Inc.
Mercy Hospital
Merritt Research Services, LLC
MetaCommunications
MetLife Chicago
MidAmerican Energy
Mid-American Research Chemical
Millang Financial Group
Modern Woodmen of America
Modine Manufacturing
Momentum Scientific
Mondelez International (Kraft Foods)
Monsanto
Motorola Solutions, Inc.
Mount Vernon Community School District
Mueller Industries
Muscatine Community School District
Muscatine Power and Water
Musco Sports Lighting, LLC
Mutual Of Omaha Financial Advisors - Iowa City, IA

NextGen Climate
Noble Network of Charter Schools
Norbert Dentressangle
North Scott Community School District
North Star Resource Group
Northern Trust
Northwestern Mutual - The Effner Financial Group
Northwestern Mutual - The Goris Group Chicago
Northwestern Mutual- DES MOINES
Northwestern Mutual Financial Network - The Zach Group
Northwestern Mutual Life Ins. Company - Milwaukee
NSK Corporation

Office Team
Omaha Public Schools
OnMedia
Otis Elevator Company
Owatonna Public Schools

Pariveda Solutions
Peace Corps
Peace Corps
Pearson
Pella
PepsiCo
Pharmacists Mutual Companies
Pinnacle Actuarial Resources, Inc.
Pleasant Valley Community School District
PLS Logistics Services
PMX Industries
Pollution Prevention
PriceWaterhouseCoopers
Principal Financial Advisors
Principal Financial Group
Produce Pro Software
Proven Business Systems
Prudential

Quincy Area Chamber of Commerce

R.S. Stover Company
Real Estate Research Corporation
Redwood Logistics
REM Iowa
Renaissance Financial
Renewable Energy Group, Inc.
RGA Reinsurance Company
Robert Half - Accountemps
Rockwell Automation
Rockwell Collins
Roth & Company PC
RSM (Formerly McGladrey)
Ruffalo Noel Levitz
RuffaloCODY

Saydel Community School District
Scheider Electric
Securian Financial Group
Sedgwick
Sedona Staffing
SFM Mutual Insurance Company
Sherwin-Williams Company
Shive-Hattery
Southeast Polk CSD
Sparboe Foods
State Farm Insurance Companies
State Street Properties Chicago
SThree
Strand Associates, Inc.
Summer of the Arts
Synergy Associates
Systems Unlimited

Tanager Place
Target (Stores and Distribution)
Target HQ
Tata Consultancy Services
TaxACT
TD&T CPAs and Advisors, PC
Teach for America
TekSystems

Telligen
Terex USA, LLC
Textura Corporation
The Buckle
The Gavilon Group
The IMT Group
The Resource Group
The University of Iowa
The VGM Group
The Washington Center for Internships and Academic Seminars
Thomas L. Cardella & Associates
Thrivent Financial
Tippie Full-Time MBA
TMOne
Total Quality Logistics (TQL)
Towers Watson
Townsquare Media
Toyota Financial Services
Transamerica
Transamerica Financial Advisors
TransUnion
Trinity Consultants
Trinity Industries
Trinity Structural Towers
TrueNorth Companies

University of Iowa Carver College of Medicine
University of Iowa College of Education
University of Iowa College of Engineering
University of Iowa College of Public Health
University of Iowa Employment Services
University of Iowa Partners
University of Iowa School of Social Work
University of Iowa School of Urban and Regional Planning

University of Iowa, University Relations/Athletics Hall of Fame/ Trademark Licensing Program
Uline
Union Pacific Railroad
United Airlines
United Fire Group
United States Marine Corps Officer Programs
U.S. Army
U.S. Army Healthcare
U.S. Navy

Vail Systems, Inc.
Van Meter
Vera French
Verizon Wireless
Vermeer Manufacturing Company
Viking Pump

WACO CSD
Waterloo Community School District
Wells Fargo Bank
Wells Fargo Consumer Lending Group
Wells Fargo Home Mortgage
Wells Fargo Wealth Brokerage
Werner Enterprises
West Liberty Community School District
West Liberty Foods, LLC
West Music Company
Whirlpool Corporation - Amana Division
Wichita Public Schools
William Blair & Company
Willowwind School
WMS Gaming
Woodward Community Based Services
Workiva
Workplace Learning Connection

POMERANTZ CAREER CENTER

Employer Relations and Events

1,548

Students attended the Fall Job & Internship Fair—September 23, 2014

161

organizations registered

Student comments:

"I like the organization and efficiency. The app is amazing and helped me prepare and evaluate companies I wanted to talk to."

"I was able to talk to new people and felt more comfortable approaching employers."

A good way to network and make cold connections with industries."

"I liked the fact that every student had the opportunity to network with their desired companies."

"It's always so organized and structured. It's easy to find the employers, help is always available, and I love the LinkedIn Photo Booth."

Career Fairs

Diversity Networking Night
— September 22, 2014

43 students attended

38 organizations participated

Actuarial Science, Insurance & Risk Management Fair
— October 1, 2014

126 students attended

31 organizations registered

Consider Iowa Networking Night
— February 24, 2015

33 students attended

24 organizations participated

Spring Job & Internship Fair
— February 25, 2015

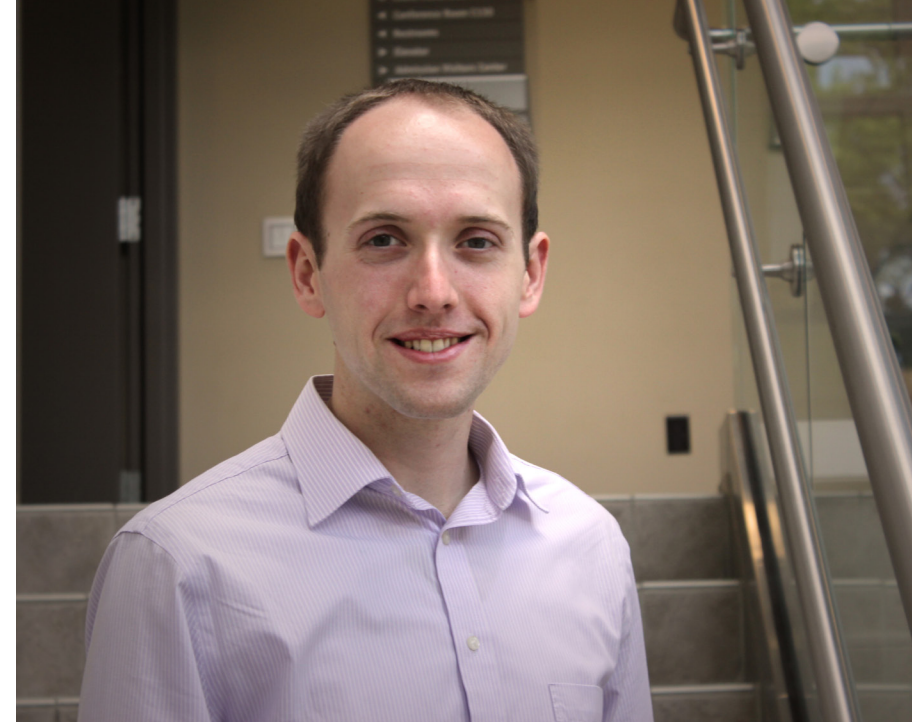
1,189 students attended

167 organizations registered

Educator Job Fair
— April 7, 2015

66 students attended

30 districts and organizations attended



Tyler Hackman

MARKETING INSTITUTE SCHOLAR,
TIPPIE COLLEGE OF BUSINESS,
MAY 2015

"The Pomerantz Career Center played a critical role in my professional development and preparation for a career after graduation. Throughout my undergraduate education, I participated in a number of mock interviews that allowed me to practice articulating my qualifications and experiences. Through the job and internship fair, I applied for, interviewed with and secured a summer internship at a Fortune 500 corporation. I also found a mentor in one of the career advisers, who not only provided advice and guidance when I asked, but regularly checked in during my job search to offer any assistance possible."



Annual Graduate Survey

The Pomerantz Career Center contacts the recent graduates of five undergraduate colleges of The University of Iowa: Tippie College of Business, College of Liberal Arts & Sciences, College of Education, College of Engineering and College of Nursing. The graduates have an opportunity to complete the survey on the web or through a call center representative upon graduation. Alumni provide several key pieces of outcome information about their employment status.

The outcome information tells whether they are:

- Employed and the industry, employer, job title, location and salary
- Continuing education and the level and location
- Not seeking employment and the reason
- Still seeking employment

Annual Graduate Survey

The University of Iowa Placement Results:
Fall 2014 – Summer 2015
Collected by Pomerantz Career Center

Overall Placement: Undergraduates

These are the results for 3,435 UI graduates out of 4,641 graduates during the period from Fall 2014 through Summer 2015 for the College of Liberal Arts & Sciences, College of Business, College of Engineering, College of Nursing and College of Education.

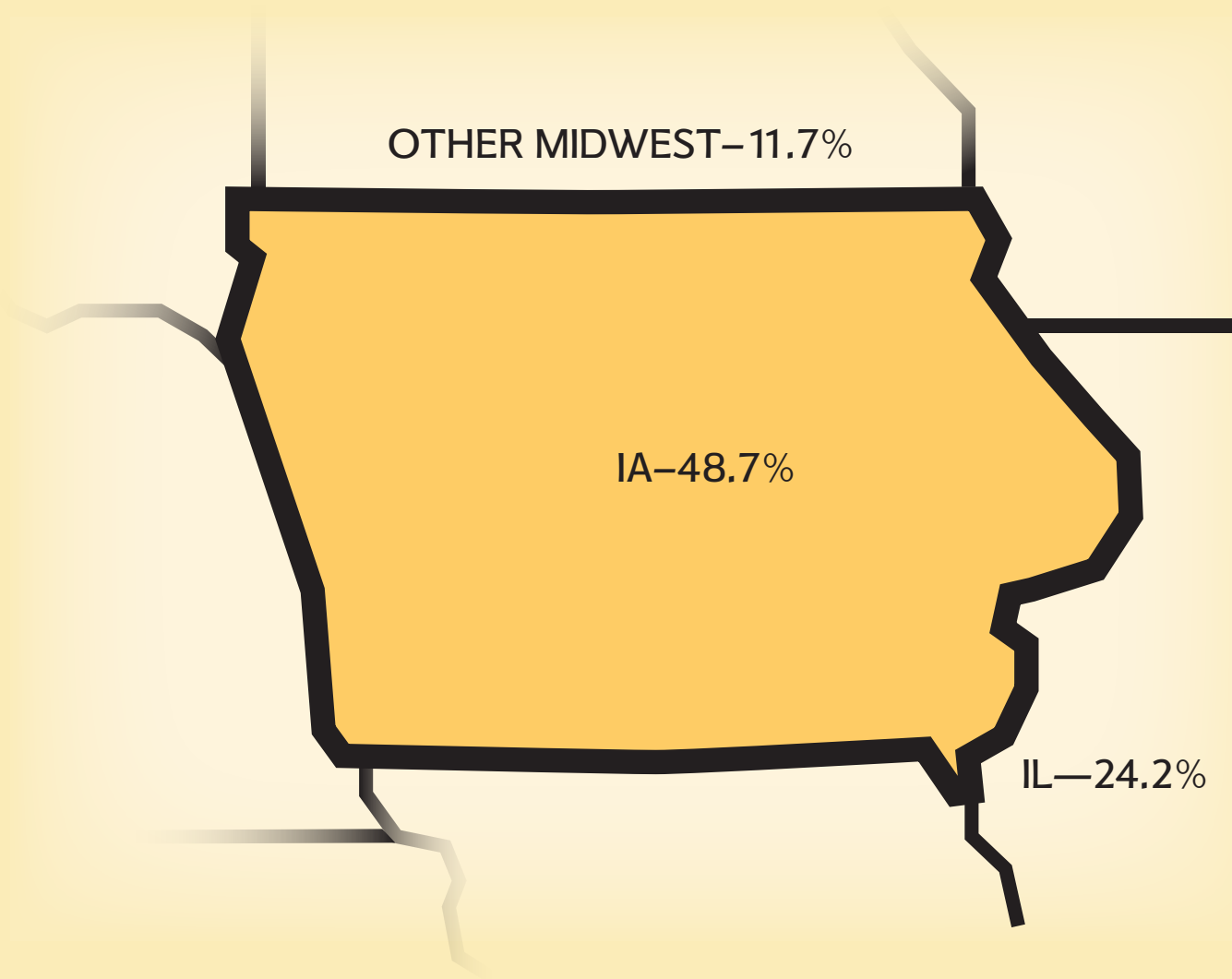
UNDERGRADUATE STUDENTS	PLACED	SEEKING
F/P Employment (2,487/3,435)	72.4%	
Continuing Education (627/3,435)	18.3%	
Not Seeking Employment (92/3,435)	2.7%	
Seeking Employment (229/3,435)		6.7%
Totals†	93.3%	6.7%

AVERAGE SALARY = \$45,423
MEDIAN SALARY = \$43,680

† Total may not add up to 100% due to rounding off;
College of Nursing and Education does not graduate students in summer semester

JOB OFFERS ACCEPTED BY GEOGRAPHIC LOCATION

States/Regions for reporting 2,206 UI Graduates Employed



- Iowa—**48.7%**
- Illinois—**24.2%**
- Other Midwest: Indiana, Kansas, Michigan, Minnesota, Missouri, Nebraska, North Dakota, Ohio, South Dakota, Wisconsin—**10.1%**
- **MIDWEST REGION TOTAL —83.0%**
- East: Connecticut, Delaware, District of Columbia, Maine, Maryland, Massachusetts, New Hampshire, New Jersey, New York, Pennsylvania, Rhode Island, Vermont—**2.3%**
- West: Alaska, California, Hawaii, Idaho, Montana, Nevada, Oregon, Utah, Washington, Wyoming—**3.6%**
- Southwest: Arizona, Colorado, New Mexico, Oklahoma, Texas—**4.2%**
- South: Alabama, Arkansas, Florida, Georgia, Kentucky, Louisiana, Mississippi, North Carolina, South Carolina, Tennessee, Virginia, West Virginia—**2.6%**
- International (All other countries, including US territories, other than the US & D.C.) —**2.3%**
- Unknown (No country reported) —**2.1%†**

Annual Graduate Survey

Tippie College of Business Placement: Undergraduate Students

The response rate for the Tippie College of Business was 659 out of 857 graduates.

UNDERGRADUATE STUDENTS	PLACED	SEEKING
F/P Employment (553/659)	83.9%	
Continuing Education (60/659)	9.1%	
Not Seeking Employment (17/659)	2.6%	
Seeking Employment (29/659)		4.4%
Totals†	95.6%	4.4%

AVERAGE SALARY = \$49,232
MEDIAN SALARY = \$50,000



College of Education Placement: Undergraduate Students

The response rate for College of Education was 124 out of 173 graduates.

NOTE: Those students who are counted as graduates from the College of Education are in turn recommended by the College of Education for teaching licensure in their respective state and receive their degree through the College of Liberal Arts & Sciences.

UNDERGRAD & MASTERS TEP STUDENTS	PLACED	SEEKING
F/P Employment (102/124)	82.3%	
Continuing Education (9/124)	7.3%	
Not Seeking Employment (2/124)	1.6%	
Seeking Employment (11/124)		8.9%
Totals†	91.1%	8.9%

AVERAGE SALARY = \$39,731
MEDIAN SALARY = \$39,900

College of Engineering Placement: Undergraduate Students

The response rate for College of Engineering was 370 out of 443 graduates.

UNDERGRAD & MASTERS TEP STUDENTS	PLACED	SEEKING
F/P Employment (278/370)	75.1%	
Continuing Education (64/370)	17.3%	
Not Seeking Employment (7/370)	1.9%	
Seeking Employment (21/370)		5.7%
Totals†	94.3%	5.7%

AVERAGE SALARY = \$59,955
MEDIAN SALARY = \$60,000

† Total may not add up to 100% due to rounding off; College of Nursing and Education does not graduate students in summer semester



Annual Graduate Survey

College of Liberal Arts & Sciences Placement: Undergraduate Students

The response rate for College of Liberal Arts & Sciences was 2,169 out of 3,026 graduates.

UNDERGRAD & MASTERS TEP STUDENTS	PLACED	SEEKING
F/P Employment (1,451/2,169)	66.9%	
Continuing Education (489/2,169)	22.5%	
Not Seeking Employment (63/2,169)	2.9%	
Seeking Employment (166/2,169)		7.7%
Totals†	92.3%	7.7%

AVERAGE SALARY = \$37,084

MEDIAN SALARY = \$35,000



College of Nursing Placement: Undergraduate Students

The response rate for College of Nursing was 113 out of 142 graduates.

UNDERGRAD & MASTERS TEP STUDENTS	PLACED	SEEKING
F/P Employment (103/113)	91.1%	
Continuing Education (5/113)	4.4%	
Not Seeking Employment (3/113)	2.6%	
Seeking Employment (2/113)		1.8%
Totals†	98.2%	1.8%

AVERAGE SALARY = \$54,152

MEDIAN SALARY = \$52,000

† Total may not add up to 100% due to rounding off;
College of Nursing and Education does not graduate students in summer semester



3M	Facebook	Morgan Stanley
Abbott Laboratories	FedEx	Motorola Solutions
AbbVie	Fidelity National Financial	Mutual of Omaha Insurance
Aflac	Ford Motor	Nationwide
AIG	Freddie Mac	New York Life Insurance
Alcoa	Gap	Newell Rubbermaid
Allstate	General Dynamics	NextEra Energy
Ally Financial	General Electric	Nike
Ameriprise Financial	General Mills	Nordstrom
Apple	Global Partners	Northrop Grumman
AT&T	Harley-Davidson	Northwestern Mutual
Bank of America Corp.	Hershey	Oracle
Baxter International	Hilton Worldwide Holdings	Parker-Hannifin
Best Buy	Honeywell International	PepsiCo
Booz Allen Hamilton Holding	Hormel Foods	Principal Financial
C.H. Robinson Worldwide	HP	Procter & Gamble
Cardinal Health	IBM	Progressive
Caterpillar	Integrus Energy Group	Ralph Lauren
CDW	International Paper	Rockwell Automation
Chubb	Jones Lang LaSalle	Sherwin-Williams
Cigna	JP Morgan Chase	St. Jude Medical
ConAgra Foods	KBR	State Farm Insurance Cos.
Costco	Kohl's	Stryker
CVS Health	Kraft Foods Group	Target
D.R. Horton	Land O'Lakes	Textron
Deere	Liberty Mutual Insurance Group	Thrivent Financial for Lutherans
Discover Financial Services	Lincoln National	Travelers Cos.
Discovery Communications	Live Nation Entertainment	Trinity Industries
DISH Network	Lockheed Martin	Union Pacific
DuPont	Lowe's	Walgreens
Ecolab	Marriott International	Walmart
EMC	Marsh & McLennan	Walt Disney
Emerson Electric	McGraw Hill Financial	Wells Fargo
Exelon	MetLife	Xerox
	Microsoft	



Top Full-Time Hiring Employers 2014-2015

Abbott	Core Fitness	IDT	Northwestern Memorial Hospital	TEKsystems
Aegon	Cottingham & Butler	Insight Global	Northwestern Mutual	Transamerica
Aerotek	Coyote Logistics Tractor Division	Intelligent Medical Objects	Pariveda Solutions	TrueNorth Companies
AIG	CRST	Iowa City Community School District	PeaceCorps	U.S. Bank
ALDI	CVS	Iowa City VA Medical Center	Pearson	University of Iowa
Allstate	Davenport Community School District	John Deere	PepsiCo	UI Foundation
American Marketing and Publishing	Deloitte	KCRG TV-9	PricewaterhouseCoopers	UICCU
AmeriCorps	Deloitte & Touche LLP	Keyot	Principal Financial Group	University of Iowa Hospitals and Clinics
Bank of America	Echo Global Logistics	Marriott	Principal Global Investors	Union Pacific Railroad
Becker's Healthcare	Enterprise Rent-A-Car	MB Financial Bank	Redwood Logistics	United States Air Force
BMO Harris Bank	Epic	McGladrey	Robert Half	United States Army
C.H. Robinson	Ernst & Young LLP	McGrath Auto	Rockwell Collins	United States Geological Survey
Cargill	Fidelity	Medix™	Ruffalo Noel-Levitz	United States Marine Corps
Caterpillar Inc.	GEICO	Mercer	Schneider Electric	United States Navy
CDW	GreatAmerica Financial Services	Mercy	Schneider National	UnityPoint
Cedar Rapids Community School District	Groupon	Microsoft	Sedgwick	VIDA Diagnostics
Cerner	HBK Engineering, LLC	National Information Solutions Cooperative	St. Luke's Hospital	Walgreens
CliftonLarsonAllen	Hibu	Nationwide	Starcom	Walt Disney
CNA Insurance	Hills Bank & Trust	Neighborhood Centers of Johnson County	State Farm	Wells Fargo
College Community School District	HNI		Stryker	West Liberty Schools
Community NeuroRehab	Holmes Murphy & Associates		Systems Unlimited, Inc.	Yelp
CompleWare Corporation	HON Industries		Tanager Place	YMCA
ConAgra Foods	Hy-Vee		Target	Youth Homes of Mid-America
	IBM		Target Corporate	
			TaxAct	



The University of Iowa
Marvin A. and Rose Lee Pomerantz
Career Center

[Click here](#) to access the Pomerantz
Career Center Staff

Pomerantz Career Center
100 Pomerantz Center,
Suite C310
Iowa City, Iowa 52242

319-335-1023
www.careers.uiowa.edu

The University of Iowa prohibits discrimination in employment, educational programs, and activities on the basis of race, national origin, color, creed, religion, sex, age, disability, veteran status, sexual orientation, gender identity, or associational preference. The University also affirms its commitment to providing equal opportunities and equal access to University facilities. For additional information, contact the Office of Equal Opportunity and Diversity, (319) 335-0705..