

2015-2016 Annual Report



Pomerantz
Career Center



MISSION STATEMENT

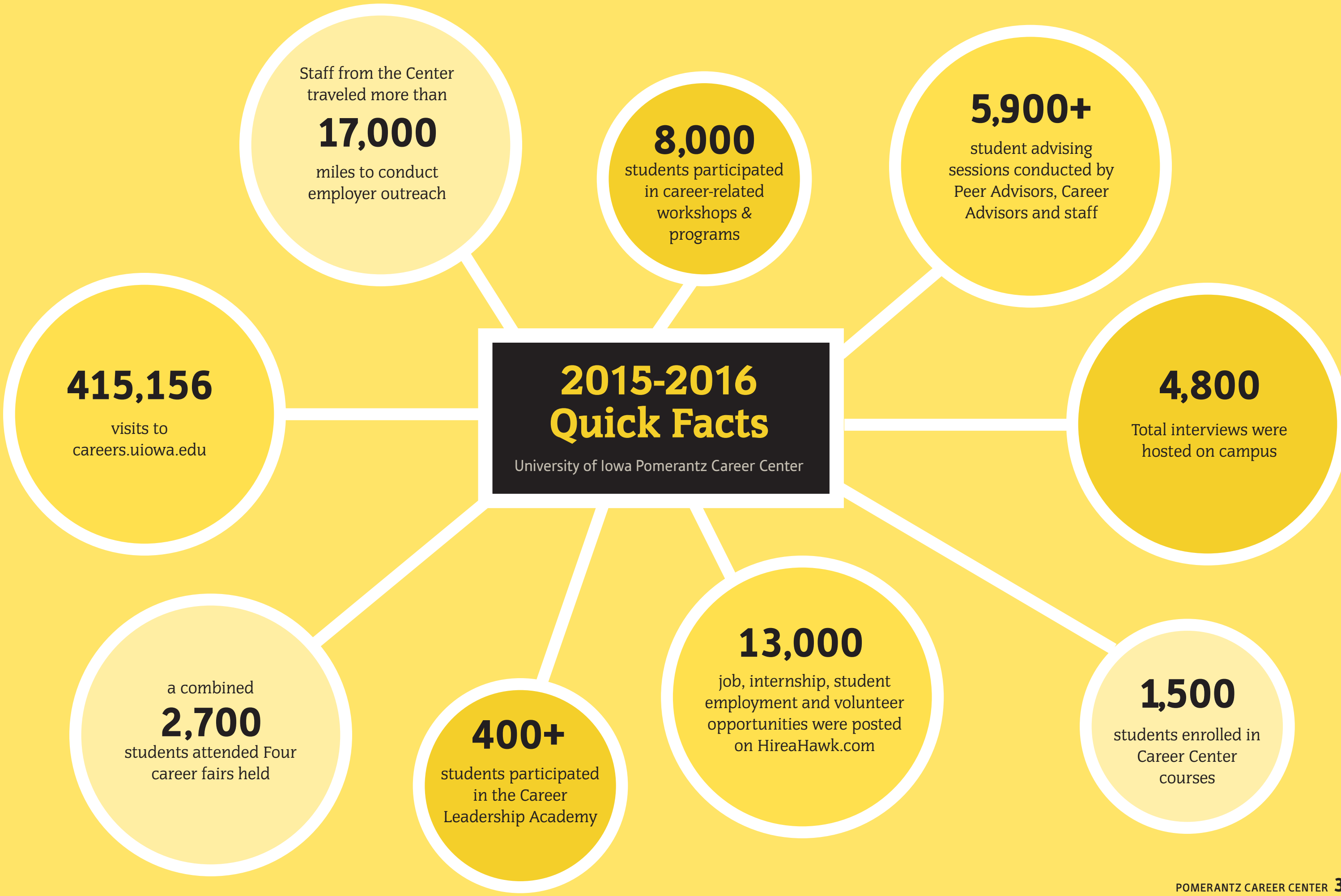
*Helping Hawkeyes
to become leaders
in their careers and
communities.*

VISION STATEMENT

*To create an engaged,
career-centered
campus that prepares
students for lifelong
professional success.*

Table of Contents

2	Mission Statement	14	Academic and Leadership Programs
3	UI Student Facts	17	Career Leadership Academy
5	Career Advancement	20	Corporate and Community Relations
8	Special Programming	21	Employer Relations and Events
9	Experiential Education	21	Recruiting Statistics
10	Top Internship Sites	21	Employer Relations Program Participants
11	Community Involvement	25	2015-2016 Annual Graduate Survey
13	Dual Career Services	28	Fortune 500 Companies





University of Iowa

Fall 2015 Enrollment Report for Undergraduates
from Tippie College of Business, Colleges of
Education, Engineering, Liberal Arts and Sciences
(CLAS), and Nursing: UI Registrar (Fall 2015)

www.registrar.uiowa.edu

	College of Business	College of Education	College of Engineering	College of Liberal Arts & Sciences	College of Nursing
GENDER					
Men	1,439	55	1,982	7,434	31
Women	897	274	695	9,297	758
Transgender	-	-	-	18	-
ORIGIN					
Resident of Iowa	1,074	-	1,311	9,305	505
Non-resident of Iowa	1,262	-	1,366	7,446	306
ETHNICITY					
American Indian or Native Alaskan	2	-	4	24	1
African American	27	3	56	637	5
Hispanic	87	25	141	1,373	28
Asian	54	5	152	638	15
2 or More	38	8	74	471	6
Native Hawaiian or Pacific Islander	2	0	5	13	3
Total Minority	210	41	432	3,156	58
Foreign	383	0	188	2,051	9
STUDENTS WITH DISABILITIES TOTAL: 631					

Career Advancement

One of the first career-related decisions students make is regarding their major. Assistance in choosing a major that will start them on a career plan is important. Career Advisors help students with major choices and evaluation of career interests through multiple techniques, including assessments and self-reflection.

Later in a student's college career, interview preparation, networking, personal branding and negotiation may be part of career-related conversations with Career Advisors.

ADVISING

Walk-in sessions and internship/
program/career advising appointments
from Aug 1, 2015-July 15, 2016

5,909

total advising
appointments

3,903

scheduled
appointments
(Career Advisors)

2,006

walk-in sessions
(Peer Advisors)

PROGRAMS PRESENTED

from Aug 1, 2015-July 15, 2016

8,619

attendees

333

at total programs
presented

284

programs presented
by Career Advisors
(7,879 attendees)

49

programs presented
by Peer Advisors
(740 attendees)

Career Advancement

From the Center's exit survey of advisees

99.5% of students reported their primary needs were met during advising or walk-in advising.

99.5% of students would recommend Pomerantz Career Center to a friend.

Most students reported feeling confused or overwhelmed before their appointment and confident or informed following their appointment.



Monica Ahrens

MATHEMATICS, MAY 2016

"I decided late in my sophomore year of college to graduate a year early and pursue graduate school. Being so young put me in a place where I wasn't sure how to navigate the process of applications, resumes and personal statements. Going to the career center and having Jamie help me through this process was such a blessing. I am very thankful to the Career Center for their help."

Career Advancement

Student Feedback on Career Advising:

"I really like my advisor (Mallory). She is really great. I believe she can help me better my experience at Iowa, and my career seems to look brighter."

"Sara was the best advisor that I have met with at the UI. She was encouraging, kind and really knew what she was talking about. She helped me to find exactly what I was looking for and more. I will definitely recommend her to other students!"

"I feel way better about my career and backup career. Jenny was very helpful!"

"Crystal was a HUGE help in making my resume stronger."



Student Feedback on Peer Advisors:

"Megan and Dan were seriously awesome and helped me tremendously! They are the best, and I can't wait to come back and, hopefully, tell them I got the internship I applied for."

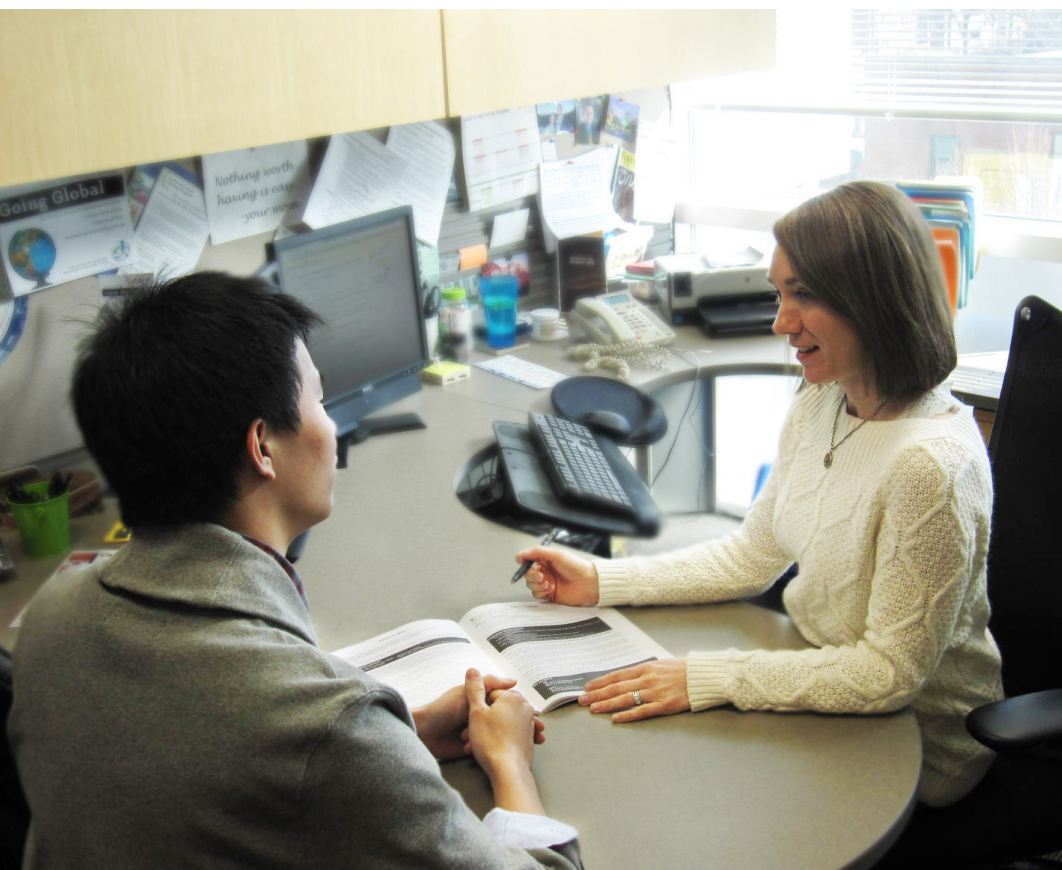
"I was surprised at the quick process I got as a walk-in. I met with someone who helped me right away. Thanks!"

"I think it really helped me a lot for answering my questions about resumes and cover letters and also the application process. I feel more comfortable doing these now."

"I like the walk-in hours provided by the Pomerantz Career Center. This is pretty convenient."

Special Programing and Services

As the needs and career goals of students change, so do the programs offered through the Pomerantz Career Center.



Career Series for International Students:

Each semester, the center does a series of workshops to help students new to the United States and the UI campus to prepare for their job and internship search.

Topics included:

- Competitive Resumes & Cover Letters
- Prepare for the Job & Internship Fair
- Interviewing to Impress
- Job & Internship Search Strategies
- Career Exploration
- Networking & Self-Marketing Skills
- Work Visa Options After Graduation
- Considering and Applying to Grad Schools

Experiential Education

Gaining experience outside of the classroom is essential for the success of students as they look to complement the skills they are gaining in the academic setting. An internship or other experiential opportunity is one of the most important activities students can participate in to prepare for a successful transition to the workplace.

The Pomerantz Career Center offers both for-credit and not-for-credit options (such as a 0-credit internship notation) to students as a way to recognize their experiences.



3,019
Internships recorded
in 2015-2016

2015-2016 Internship Data

Semester	Online Survey	Zero-Credit	PCC Credit	UI Dept.	TOTAL
Fall 2015	46	48	30	881	1,005
Spring 2016	18	86	56	1,004	1,164
Summer 2016	216	151	50	433	850
TOTAL	280	285	136	2,318	3,019
From HireaHawk.com		From MyUI			

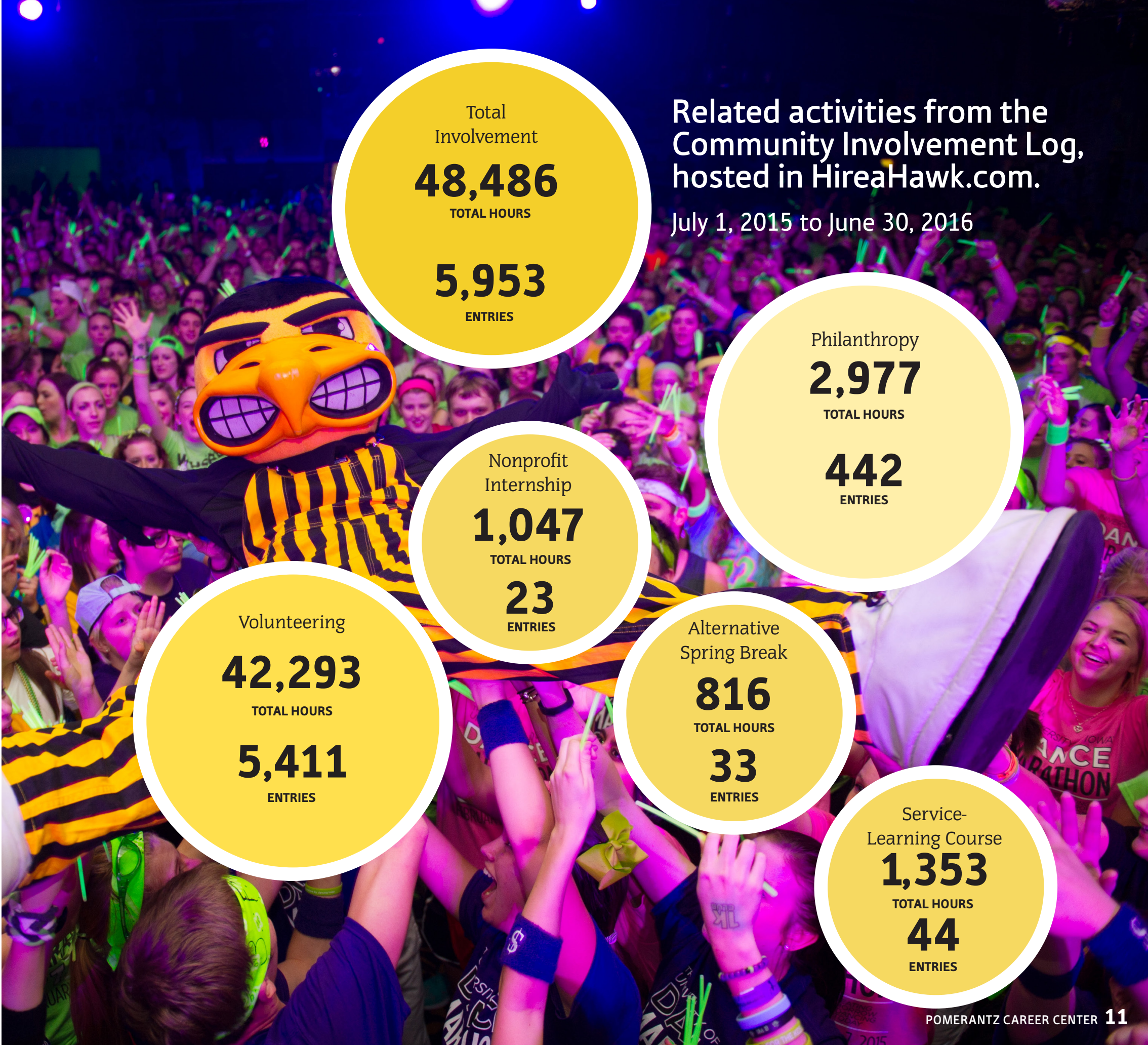


Top Internship Sites 2015-2016

ACT	Athletico	City of Coralville	Disney	First National Bank of Iowa	Honkamp Krueger & Co., P.C.
AEGON	Baltimore City Paper	City of Iowa City	District Office of	First Presbyterian Church, Davenport	Huawei
Aegon Asset Management	Barracuda Networks	Coalition for the Homeless	Congresswoman Cheri Bustos	Fitness Xpress	Northwestern Mutual
AEGON USA Realty Advisors, LLC.	Bayer HealthCare Pharmaceuticals Inc.	Coldwell Banker, Prestige Midwest Realtors	Domestic Violence Intervention Program	Frerichs Law Office	Prelude Behavioral Services
Aerotek	BMO Harris Bank	Colgate Palmolive	Dreamfield Venture	Futurewei Technologies Inc.	PricewaterhouseCoopers
AgReliant Genetics	brainpup	CollegeFashionista	Dubuque County Attorney	Gender, Women's and Sexuality Studies	Rockwell Collins
All American Concrete, Inc.	Brenda Nations	Colony Brands Inc.	Empowered Fitness	Genentech	RSM
Altoona Campus Kids Klub	Bridgestone Retail Operations, LLC	Communication Studies Student Association	Entertainment Cruises	General Electric	Summer of the Arts
Amazon	Bright Futures Chiropractic/ Bonfire Fitness	Community 1st Credit Union	Ernst & Young LLP	Goldman Sachs	Target Stores
American Hotel Register	Burkhart Marketing Associates	Cook Appraisal	ESD Studios	GreatMoods	Terry, Lockridge & Dunn
Amphenol AITC	Cadence Design System	Coolfire Studios	ETS	Habitat for Humanity Quad Cities	The Principal Financial Group
Angela Burke	Camp Adventure Youth Services	Country Stampede	Exile Brewing Company	HACAP, Inc.	Transamerica
AOL	Campus Activities Board	Crowd Surf	Farm Bureau	Hawkeye Brokerage Center	U.S. Food and Drug Administration
Apple	CCM Think Impact	Crystal Flower Shop, Inc.	Farm Bureau Financial Services	Higher Learning Technologies	UI Hospitals and Clinics
Apple Hill Center for Chamber Music	Chicago Woman Magazine	CUNA Mutual Group	FBL Financial Group, Inc.	Hiscox USA	UI Foundation
AroundCampus Group, The	Circuit Court of Cook County	Delirio Films	Fesler Auto Mall	HNI Corporation	University of Iowa
AT&T		Deloitte LLP	First Bank of the Lake		Walmart Pharmacy
			First Congregational Church		

Community Involvement

Beyond the classroom and activities, Hawkeyes are involved in service and service-learning through independent volunteering, structured classroom service and alternative spring break. Students from Iowa make an impact in the immediate area and across the globe through service to those in need.



Related activities from the Community Involvement Log, hosted in HireaHawk.com.

July 1, 2015 to June 30, 2016

Total Involvement

48,486

TOTAL HOURS

5,953

ENTRIES

Philanthropy

2,977

TOTAL HOURS

442

ENTRIES

Nonprofit Internship

1,047

TOTAL HOURS

23

ENTRIES

Volunteering

42,293

TOTAL HOURS

5,411

ENTRIES

Alternative Spring Break

816

TOTAL HOURS

33

ENTRIES

Service-Learning Course

1,353

TOTAL HOURS

44

ENTRIES

Community Involvement

Volunteer and Service Site Examples:

Better Earth Textile Recycling
Iowa State Registry for Interpreters
for the Deaf
Ronald McDonald House
Aurora Health Care Psychiatric
Hospital
Bur Oak Land Trust
United Action for Youth
Courage League Sports
Brain Injury Alliance for Iowa
Immigrant Rights Network of Iowa
Four Oaks Family & Children's
Services
Sholom Home
Midwest Music Therapy
Des Moines Hospice
Free Medical Clinic
Fury Friends Refuge
Cedar Rapids Community
School District

TOP 5 MAJORS
RECORDING THE MOST
COMMUNITY
INVOLVEMENT HOURS:

Psychology
Health & Human Physiology
Communication Studies
Pre-Business
Nursing



Student Response on their Experiences:

"It is a humbling experience to work with those who are less fortunate. It got me out of the bubble of Iowa City and helped me understand that there are many larger problems in this world than I have imagined."—**AUSTIN**

"I have a better understanding of the difference between cultures and can better communicate with people from different backgrounds. It also strengthened my leadership ability."—**YANNING**

"I learned the importance of working for something greater than yourself. Our environment is not something to take light heartedly. There is a great sense of satisfaction when you are able to improve an area that will last much longer than you will. Knowing that what we created will be there for future students to enjoy gives all of us great satisfaction."—**WILLIAM**

"I learned how to solve problems, effectively communicate to a large audience, and I accomplished my personal goal of giving back to the community."—**ZAREEF**

Dual Career Services

In 2015-16, Dual Career Services (DCS) assisted seven of the 13 colleges and academic units with recruiting and hiring hiring. 48 accompanying partners were assisted with job searches. 22 continued services into 2016.

- The DCS also provided **25** limited-service appointments to individuals who did not meet the criteria for full service.
- **30** employers (including the University of Iowa and the UIHC) in seven cities hired DCS clients, with starting salaries of the successfully hired clients totaling approximately \$1.4 million or an average of \$53,846 per hire.



Staff met with
39
prospective candidates
by referral from
departments for
information about
services.

"We always like auditors with experience. We recruited one of our IT auditors as a dual career situation and it has worked out quite well for us."—**TODD, UI INTERNAL AUDITING**

"It was great to meet with you. I appreciated your candid insight and suggestions to help with my future."
—**DCS CLIENT CR**

"Thank you again for setting aside your time to meet with me last week. I appreciate your input and suggested changes to my resume and will be using that version moving forward. I felt that the information on the resume covered what I have done and am capable of doing."
—**DCS CLIENT MD**

Academic and Leadership Programs

Pomerantz Career Center is continually looking for ways to offer services in different and innovative ways; one of those ways is through a traditional course setting. More than 1,000 students at the University of Iowa enroll each semester in more than 20 different courses offered through Pomerantz Career Center as well as a certificate in Leadership Studies.

These courses offer students an opportunity to interact with professionals from the community and beyond to learn about career paths and networking. Students take courses under the departments of Leadership Studies (LS) or Career Center Programs (CCP).



Mark Zhu

ART—PHOTOGRAPHY AND FRENCH, MAY 2016 GRADUATE

“The Pomerantz Career Center has been a great asset to me throughout my college years. I always find myself coming here for advice on my resume and cover letters, as well as insights on academic and career choices. Amanda at the Career Center connected me to the Student Life Marketing + Design at the IMU, where I landed a student job as a photographer and have since worked there for 3 years. This job helped me discover my passion for photography and art and has had a great impact on my academic and career paths. During my last year of college, Amanda also guided me through the application process for graduate schools. In the fall of 2016, I will be attending Boston University for MFA in graphic design, and I’m really grateful to the Career Center for their resources and services that helped me achieve this.”

Academic and Leadership Programs

Overall Fall 2015 - Summer 2016 Course Enrollment

Course	F '15	Sp '16	Su '16	Total
Job Search Strategies	29	34	0	63
Career Exploration	77	106	0	183
The Washington Center	2	4	5	11
Communication for the Workplace	26	26	0	52
Office Etiquette	32	22	0	54
Successful Teamwork	30	25	0	55
Suit Camp	28	0	0	28
Social Media for the Job Search	85	86	47	218
Advanced Job Search Skills	36	26	0	62
Moneywise	44	49	34	127
Strengths-Based Leadership	11	10	0	21
Culturally Intelligent Leadership	12	0	0	12
Graduate Admissions 101	33	25	0	58
Perspectives on Leadership	27	20	0	47
Career Leadership Academy Part 1	103	141	22	266
Career Leadership Academy Part 2	54	51	10	115
Leadership Community Seminar	22	0	0	22
Academic Internship	18	34	36	88
Leadership Certificate Internship	4	3	9	16

TOTAL ENROLLMENT 1,498

* Data is from registrations in MAUI

137 students were declared as pursuing the Certificate in Leadership Studies as of Summer 2016.

26
students were conferred
the Certificate in
Leadership Studies
during Fall 2015-
Spring 2016

Student Quotes About Courses

"This class is one of the best I've taken so far. It's one of the classes that I wish was a 16-week class, and it's only a 6-week class. I've learned so much not just about teamwork but careers in general. I highly recommend this course to anyone at Iowa."

(SUCCESSFUL TEAMWORK IN THE WORKPLACE)

"I've learned about so many resources in this class. This class would benefit nearly every college student."

(CAREER EXPLORATION)

"I really liked this class, it helped me explore ideas on where I want to go in the future. It also showed me the best ways to look for jobs and interview for jobs as well as being a good working professional once getting a position."

(JOB SEARCH STRATEGIES)

"This course was very informative and I learned a lot. I would recommend this course to anyone because managing personal finances is an essential skill in life."

(MONEY WISE: PERSONAL FINANCE BASICS)

Academic and Leadership Programs

2015-16 Course Stats

Professional Development Courses:

Upon completing the OFFICE ETIQUETTE FOR THE WORKPLACE course, **98%** of students who took the post-test were able to identify a strategy of how to work effectively with someone of a different generation within a workplace environment.

Upon completing the COMMUNICATION IN THE WORKPLACE course, **93%** of students who took the post-test were able to explain how both verbal and written communication can be interpreted in the workplace.

Social Media for Your Jobs Search:

In the SOCIAL MEDIA FOR YOUR JOB SEARCH course, students' confidence in their ability to build a professional online presence increased from an average of 56% prior to the course to **91%** after completing the course, according to the pre- and post-test.

Strengths-Based Leadership:

In the STRENGTHS-BASED LEADERSHIP course, students' confidence in their understanding of the process of developing strengths increased from an average of 64% prior to the course to **93%** after completing the course, according to the pre- and post-test.

Suit Camp for the Job Search:

Upon completing the SUIT CAMP FOR THE JOB SEARCH course, **95%** of students who took the post-test were able to give examples of effective interviewing and networking techniques.



Career Leadership Academy

When asked, employers continually ask for and recognize the importance of skills that add to the technical skills learned in academic classes. Skills like communication, analytical skills, teamwork and others rise to the top in what employers are seeking. One of the ways students can gain those skills to aid them on campus and beyond is through the Career Leadership Academy, a two-part academic course focused on employment and leadership.



425

students participated,
representing
45 different majors

27%

of participants were
International and
minority students

Top 5 Majors:

- Enterprise Leadership
- Business
- Communication Studies
- Sport and Recreation Management
- Interdepartmental Studies

1,114

—Total Number of CLA Alumni
who have completed the entire
program since program inception
in January 2007



Service Projects and Community Partners Aided in Career Leadership Academy Courses

Fall 2015: Big Brothers Big Sisters, Iowa City Veterans Administration Hospital, Rape Victim Advocacy Program of Iowa City, Iowa City Animal Care and Adoption Center, Ronald McDonald House, Table to Table and Projects for Assistance in Transition from Homelessness (PATH)

Spring 2016: Iowa City's Shelter House, United Action for Youth, Tippie Build – Habitat for Humanity, Johnson County Crisis Center, Ronald McDonald House, and Habitat for Humanity

CLA grads work in hundreds of different fields across the country from Portland, OR, to Boston, MA, and Salt Lake City, UT, to Orlando, FL. They are becoming everything—lawyers, doctors, engineers, teachers, account managers, entrepreneurs, etc.

Sampling of Organizations where CLA Graduates Work

Acquity Group
American Academy of Pediatrics
American Cancer Society
Ameriprise
Anheuser-Busch
Brooksource
ConAgra Foods
Denver Area School District
Google
Hy-Vee

John Deere
Learfield Sports
Merrill Lynch
Northwestern Mutual
Pricewaterhouse Coopers
RAPP China
Rockwell Collins
State Farm
Target
UI Hospitals and Clinics
US Bank
..... and many, many more!

Making Connections

120 Employers have participated in program events with CLA students this year.



Career Leadership Academy

Sample of Learning Outcome Results

- 94%** of students believe they can apply strategies to effectively solve problems
- 96%** of students believe they can help groups work toward a common goal
- 96%** of students believe they can articulate their personal leadership philosophy
- 94%** of students believe they are able to work cooperatively with others
- 90%** of students learned to discuss their transferable skills in an interview setting
- 87.5%** of students felt they could apply their personal brand to anything related to the job search



Most Impactful Thing Learned –Part 1 and 2

“The most impactful thing that I learned was how to take advantage of networking skills. CLA has pushed me and given me more confidence in myself. It helped me embrace my skills and share them with others.”

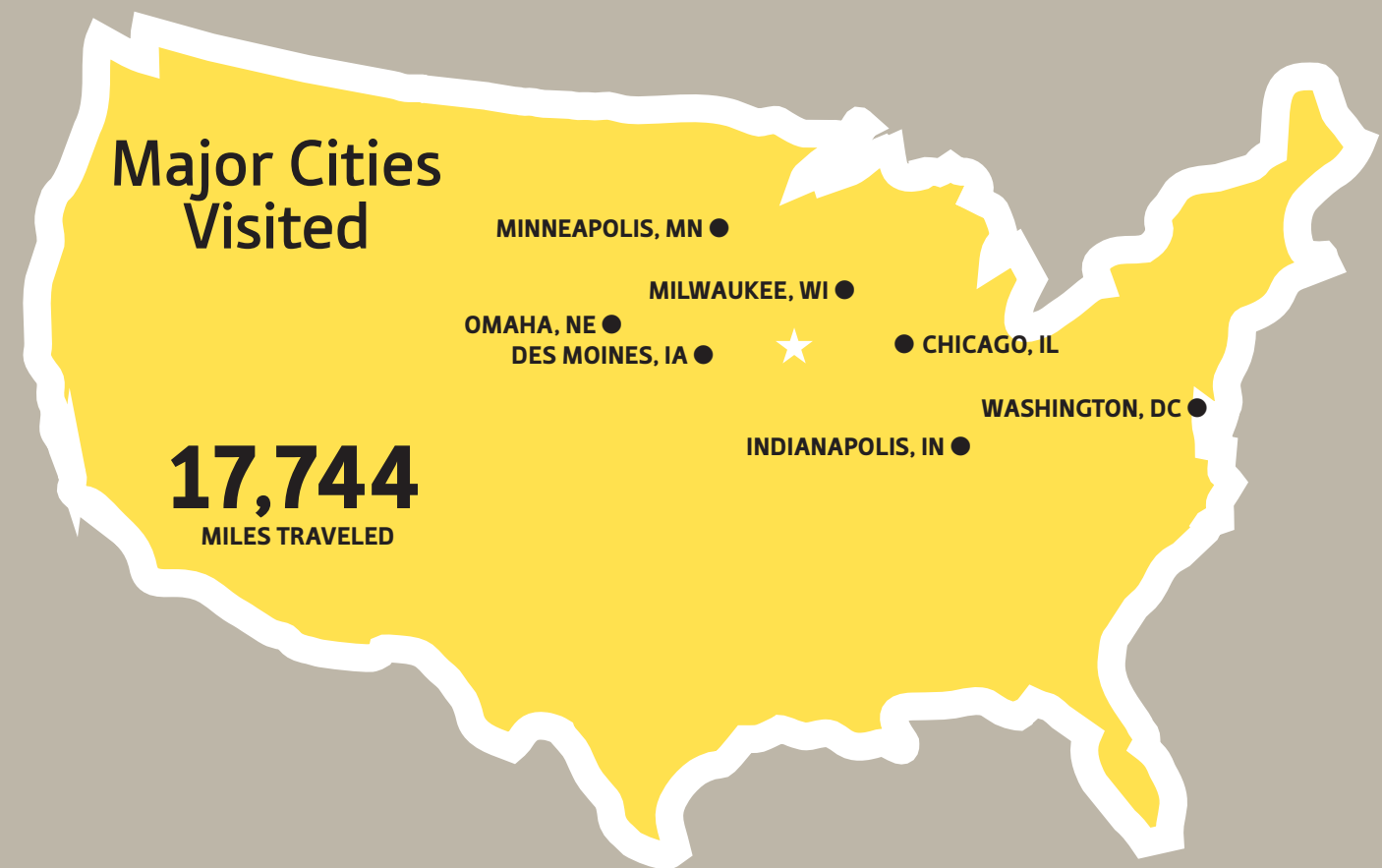
“By giving me an understanding of the many different personality and leadership styles, the different ages and generational gaps that one will encounter in the work world, and topics such as culture, networking and the identification of our own top skills.”

“I think CLA has really taught me who I am as a person. Before the class, I did not have a firm grasp on my strengths, communication style or leadership qualities. Knowing who I am will enable me to effectively apply my skills to real world situations and provide me with the best opportunities to succeed in everything I do.”



Corporate and Community Relations

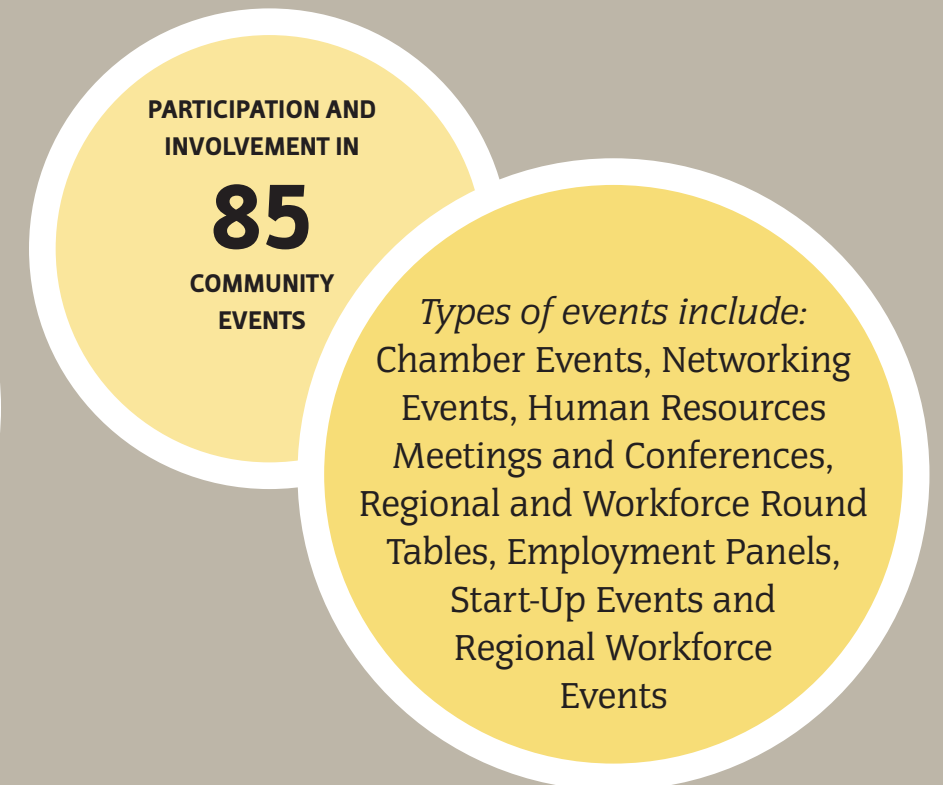
Employer relationships are very important to the Pomerantz Career Center. These relationships allow organizations to find new talent to add to their team while also creating opportunities for Iowa undergraduates. Outreach and consulting to assist in on-campus branding is conducted annually with a range of employers both small and large, from a variety of industries.



Employer Outreach



Community Outreach



Employer Relations and Events

Through on-campus interviews, mock interviews, career fairs and other campus activities, employers and UI students are able to connect and discuss future opportunities.

2015-2016 On-Campus Recruiting Statistics

4,798

On-Campus Interviews
(Includes Full-time/
Internships/Mock
Interviews and College of
Law interviews)

12,958

Jobs, Internships and
Student Employment
Opportunities
Posted on
HireaHawk.com
(2016)



573

Employers Recruiting
On Campus
(Includes Career Fairs/
On-Campus Interviews/
Events)

Employer Relations Program Participants

Organizations that have participated in Career Fairs, On-Campus Interviewing and/or Mock Interviews in 2015-2016 include:

A.Y. McDonald Mfg. Co.	AppleTree Children's Center	BMO Harris Bank	Cerner Corporation	Cottingham & Butler
ABF Freight System, Inc.	Applied Predictive Technologies	Boehringer-Ingelheim Vetmedica	Chicago Apartment Finders	COUNTRY Financial
Academy for Urban School Leadership	Archdiocese of Dubuque	Briarwood Health Care Center	Chicago Public Schools	Coyote Logistics
Academy for Urban School Leadership, Chicago Teacher Residency	Archer Daniels Midland Company (ADM)	Bridgestone Retail Operations, LLC	Chicago Twenty Something Inc.	Crawford, Murphy & Tilly, Inc. (CMT)
Access Systems, Inc.	Armament Research, Development and Engineering Center	Brooksource	ChildServe	CRST
Ace Hardware Corporation	AroundCampus Group, The	bswift	Chubb	Crystal Equation Corporation
ACT	ASC Communication, Inc.	Buckle, Inc.	CIGNA Corporation	CUNA Mutual Group
Advanced Technologies Group (ATG)	ASPIRA Inc. of Illinois	Buffalo Wild Wings	Citizens of the World Charter Schools Kansas City	Davenport Community School District
Aerotek	Athene USA (Formerly Aviva)	Bunchball	City Year	Dayton Freight Lines
Affiliates Management Company	ATS Automation	Burlington Community School District	CIVCO Medical Solutions	Deloitte LLP
Aflac		Businessolver	Clarion Highlander Hotel & Conference Center	DENSO International America
Aflac Global Investors			Clear Creek Amana Community School District	Des Moines Public Schools
AFN (Advantage Freight Network)	Bank of America/Merrill Lynch		Clearwater Analytics	Desert Sands Unified School District
Agri-Industrial Plastics Company	Bankers Trust		Clifton Larson Allen	Design Engineers
AIM Group	Barr Engineering Company		Clinton Community School District	Dick's Sporting Goods
Aldi	BASF		CNA Insurance	Digital Doc
Aldine ISD	Baxalta Incorporated		Cobham Mission Systems	Direct Supply
Alliant Energy	Bazooka Farmstar		College Community School District	DivvyDOSE
Allstate Insurance	berganKDV		College Possible	Dunn Solutions Group
ALPLA	Berkley Technology Services		Colony Brands Inc.	DuPont
Alzheimer's Association - East Central Iowa Chapter	Berkshire Hathaway Homestate Companies		Columbus Junction Community School District	Dyadic
American International Group (AIG)	Bettendorf Community School District		Community High School District 155	Dynamite Ag
American Junior Golf Association	Billion Automotive		ConAgra Foods, Inc.	Eaton Corporation
American Marketing & Publishing	Biotech Pharmaceuticals Corp.		Converge Consulting	Echo Global Logistics & Command Transportation
American Ordnance LLC	BITCO		COOK, Inc.	
American Trust & Savings Bank	BKD, LLP (Formerly Wolf & Co)		Cortland Capital Market Services	
AmeriCorps NCCC	Blain's Farm & Fleet		COTG, a Xerox Company	
Andersen Corporation	BMM Transportation			
Aon				
Apex Systems				

Continued >>



Employer Relations and Events

Employer Relations Program Participants CONTINUED

Edgewood Chemical Biological Center	Frontier Natural Products	Hanley, Flight & Zimmerman	Iowa City Regina	LattaHarris LLP	Menards, Inc.	Northern Natural Gas
Egen Solutions	FTI Consulting	Hawkeye Brokerage Center	Iowa County Engineer’s Association	Laurel-Concord-Coleridge Schools	Mercy Hospital	Northern Trust
EKS&H		HawkeyePedershaab	Iowa Department of Corrections	Lee Enterprises	Merritt Research Services, LLC	Northwestern Mutual - The Effner
Eldorado Trading Group		Hawthorne Direct	Iowa Department of Public Safety	Leepfrog Technologies	MetaCommunications	Financial Group
EleMech	Galapagos Charter Schools	HB Fuller	Iowa Department of Transportation	Legal and General Investment	MetLife Chicago	Northwestern Mutual - The Goris
Elite Satellite	Gallup	HBK Engineering, LLC	Iowa Division Banking	Management America	MHC Kenworth	Group Chicago
EMC Insurance Companies	Geater Machining and Manufacturing	HDR Inc.	Iowa Fertilizer Company	Leo Burnett Advertising	Microsoft	Northwestern Mutual- Des Moines
Emerson Process Management/Fisher	GEICO	Henderson Products, Inc.	Iowa Insurance Division	Levi, Ray & Shoup, Inc.	MicroVention	Northwestern Mutual Financial
English Valley Community School District	General Electric	Herzog Technologies, Inc.	Iowa Mutual Insurance Company	Liberty Public Schools	MidAmerican Energy	Network - The Zach Group
Enterprise Rent A Car - Heartland and Chicago	General Mills-MN	Hillphoenix Specialty Products	Iowa Natural Heritage Foundation	LightEdge Solutions	Midwest Growth Properties -	Norwalk
Entertainment Cruises	Genova Technologies	Hills Bank and Trust Company	Iowa School for the Deaf/Iowa Educational Services for the Blind and Visually Impaired	LimoLink, Inc.	Hawkinsons	Nucor Buildings Group (American Buildings Company)
Epic	Gerdau	Hirschbach Motor Lines	Iowa Solutions	Lincoln Financial Group	Midwest Professional Staffing	NXT Team
Ernst & Young	Gilbane Building Company	HNI Corporation	Iowa Valley School District	Lincoln Public Schools	Millang Financial Group	
ESCO Group	Girl Scouts of Eastern Iowa and Western Illinois	Holmes Murphy & Associates		Linn-Mar Community School District	Milliman	Office of the Iowa Secretary of State
Ethos Group	Glendale Elementary School District #40	Honkamp, Krueger, & Co	J.H. Findorff.com	Load Delivered Logistics	Minneapolis Financial Group	Office Team
	Glenwood Community School District	Hoopis Financial Group, a general agency of MassMutual	Jewell Tool Technology	Lockton Companies	Minneapolis Police Department	Old Brick
FactSet Research Systems	GNP Company	Hormel Foods Corporation	Jewel-Osco	Lower Kuskokwin School District	MMS Consultants, Inc.	Oliver Wyman Actuarial Consulting LLC
Fast Enterprises	GoDaddy	Houston Independent School District	John Deere	LWBj	Modern Woodmen of America	Omaha Public Schools
Fastenal Company	Goldman Sachs	HR Green	Johnson Controls Inc.		MODUS Engineering	OmniVista Solutions, Inc.
Federal Bureau of Investigation	Goodwill of the Heartland	Hy-Vee, Inc.	Joliet Township High School	Maine TWP High School District 207	Moline	Oracle
Federal Deposit Insurance Corporation (FDIC)	Google			Manhard Consulting	Momentum Staffing Group	OSO USMC
Federal Home Loan Bank of Des Moines	Gordmans	IAC Group	Kansas Department of Transportation	Manor Hall International School	Monsanto	Otis Elevator Company
Federal Mogul Corporation	Graco Inc.	IBM	Katecho	Marco, Inc.	Motorola Solutions, Inc.	Ottumwa Community Schools
Federated Mutual Insurance Company	Grantek Systems Integration	ICONIQ Capital	Kenilworth Science & Technology School	Marion Independent School District	Mount Vernon Community School District	Owatonna Public Schools
Fehr Graham	Grassroots Campaigns	IDNR Dam Safety Program	Kent Corporation	Marion Process Solutions		
Fidelity & Guaranty Life	GreatAmerica Financial Services	IDx LLC	Kern High School District	Marriott International	MSA Professional Services	Palmer Group
Fidelity Investments	Greater Cedar Valley Alliance & Chamber	iHeartMedia	Kforce, Inc.	Marsh and Mercer	MSDSonline	Pariveda Solutions
First National Bank of Omaha	Greater Des Moines Partnership	IIW, P.C.	Kiesling Associates	Marshalltown Company	Mt. Pleasant School District	Parker Hannifin Corporation
Fleet Feet Sports	Greater Dubuque Development Corporation	IMPACT	Kildeer District 96	Mason City Community Schools District	Muscatine Community School District	Parker Unified School District
FM Global	Green Iowa AmeriCorps	Innomatix LLC	Kimberly Clarke	Mass Markets (formerly TMOne and ERC)	Musco Sports Lighting, LLC	Pasadena Public Schools (Texas)
FoodCorps	Grinnell Mutual Reinsurance Company	Innovative Software Engineering	KJWW Engineering Consultants	Maurice Sporting Goods	Mutual Of Omaha Financial Advisors - Iowa City, IA	PCT Engineered Systems
Foth & Van Dyke LLC	GROWMARK	Insight Global, Inc.	Kohl’s Department Stores	MB Financial Bank		Peace Corps
Fountain Fort-Carson School District #8	Guardian Industries	Integrated DNA Technologies	Kohler Co.	McAdam Financial Group	Nanomedtrix	Pearson
Fresh Thyme Farmers Markets	Hach Company	International Paper, Cedar River Mill	KONE	McClure Engineering	Nationwide Insurance	Pella Corporation
Frontier Co-op	Hall & Hall Engineers, Inc.	Iowa 80 Group	KPMG LLP	McGrath Automotive Group	Neogen	Penske Truck Leasing
	Hampton, Lenzini and Renwick Inc.	Iowa Army National Guard	Kum & Go	McGraw-Hill Education	New York Life Insurance Company	Pepsico
		Iowa Bankers Association	Kunkel & Associates, Inc.	Mead Johnson Nutrition		Pixar Animation Studios
		Iowa Board of Educational Examiners	Kwik Trip, Inc.	Mediacom		
		Iowa City Community School District		Medirev		
				Medix Staffing Solutions, Inc.		

Continued >>

Employer Relations and Events

Employer Relations Program Participants CONTINUED

Pleasant Valley Community School District
PLS Logistics Services
PMX Industries
Pollution Prevention Services
Price Industrial Electric, Inc.
PricewaterhouseCoopers (PWC)
Primerica
Principal Financial Group
Principal Financial Group - Iowa City
Produce Iowa
Produce Pro Software
Proven Business Systems
Prudential

QCI

R.S. Stover Company
Raining Rose
Ralston Public Schools
Real Capital Markets
Real Estate Research Corporation
Red Star Yeast Company
Renaissance Financial
Renewable Energy Group, Inc.
RFA Engineering
RGA Reinsurance Company
Rialto Unified School District
Rite-Hite Corporation
Robert Half International/
Accountemps
Rock Island Community School District
Rockwell Automation
Rockwell Collins
Roth & Company PC
RSM (Formerly McGladrey)
RTM Engineering Consultants
RTP COMPANY
Ruffalo Noel Levitz
Rush University Medical Center

Sabljak Raether Hogerton, Milwaukee
Safelite Group
Sammons Financial Group
Sam's Club
San Antonio ISD
SantosHuman, Inc.
Saydel Community School District
Scheider Electric
Schumacher Elevator Company
Scientific Games Interactive
Securian
Sedgwick
Sentry Insurance

Sequel Youth & Family Services
Shasta QA
Shaw Industries
Shearer's Snacks
Sherwin-Williams Company
Shive-Hattery
Shoemaker & Haaland
Siemens Product Lifecycle
Management Software Inc.
Snyder & Associates
Sogeti USA
Solar Plastics, Inc.
Sonoma Partners
Source Allies, Inc.
Southeast Polk Community School District

Southwestern Advantage
Stanley Consultants
State Farm Insurance Companies
State of Iowa
State Street
Statistics & Control, Inc.
Stepan Company
Strand Associates, Inc.
Summer of the Arts
SWWC Service Cooperative
Synergy Associates

Tanager Place
Target (Stores and Distribution)
Target Corporation (HQ)
Tata Consultancy Services
Tate & Lyle
TaxACT
Teach for America
Team Staffing Solutions
TekSystems
Telepharm
Telligen
Terex Corporation
Textura Corporation
The Buckle
The Burke Group
The Gazette
The IMT Group
The Kraft Heinz Company
The LaSalle Network
The Procter & Gamble Company
The Washington Center for
Internships and Academic Seminars
The Whiting-Turner Contracting
Company
Thomas L. Cardella & Associates
Thrivent Financial

Tinker Air Force Base Civilian
Employment
Tippie Full-Time MBA
TMC Transportation
Total Quality Logistics (TQL)
Townsquare Media
Transamerica
Trapeze Group
Travelers Companies, Inc.,
Trinity Consultants
Trinity Industries
TRISTAR Insurance Group
TrueNorth Companies
Trunk Company

U.S. Bank
U.S. Xpress Logistics
UI Center for Biocatalysis and
Bioprocessing
UI College of Education
UI College of Law
UI College of Medicine
UI College of Public Health
UI Graduate College
UI Museum of Natural History
UI School of Urban and Regional
Planning
UI Study Abroad Internships
UICCU
Uline
Union Pacific Railroad
United Fire Group
United Rentals
United States Liability Insurance
Group
UnitedHealth Group
Universal Industries, Inc.
University of Chicago
UNO Charter School Network
Urban Teachers
US Air Force
US Army
US Army Chaplain Corps
US Army Corps of Engineers Rock
Island District
US Army Corps of Engineers, Omaha
District
US Army Healthcare
US Department of State
US Marine Corps Officer Programs
US Navy

Vail Systems, Inc.
Valent Biosciences Corporation
Van Meter

Vascular Solutions, Inc.
Verizon Wireless
Vermeer Manufacturing Company
Vibrant Credit Union (formerly Deere
Employees Credit Union)
VIDA Diagnostics, Inc.
Viking Pump
Vizient
Von Maur
Voya

Wabtec Railway Electronics
Walgreens
Walmart Stores Inc.
Washington Elementary School
District
Waterloo Community School District
Waukegan Community Unit School
District No. 60
Wells Enterprises
Wells Fargo - Community Banking
Wells Fargo Consumer Lending Group
Wells Fargo Home Mortgage
Werner Enterprises
West Bend
West Des Moines Community School
District
West Liberty Community School
District
West Liberty Foods, LLC
Whirlpool Corporation - Amana
Division
White Bear Lake Area Schools
Wichita Public Schools
Widefield School District 3
Willett, Hofmann & Associates, Inc.
William Blair
Williamsburg School District
Willis Towers Watson
Workiva

Xavier High School
XL Specialized Trailers

Yuma Union High
School District #70

Zoetis



Lauren Bannon

FINANCE AND MARKETING, MAY 2016 GRADUATE

“Mock interviews and the career fair were crucial to my internship and full-time opportunities. The Career Center is a great go-to place, but even cooler is that they come to you. Sara Burden and other advisors have presented to various classes and orgs I’m involved with, and each time, I learn something new about the job/internship search. Without their expertise and aid, I and many other students would not have the same professional polish the University of Iowa and Tippie College of Business prides themselves on.”

Over
1,000
more positions
were posted in
2016 thank 2015 in
HireaHawk.com



Employer Relations and Events

Student comments:

"The Fair was a great opportunity. Everyone should go at least once."

"The Fair felt laid back and the recruiters were welcoming and friendly."

"The Fair provides a good learning experience for students and the ability to have face time with companies you may otherwise not be able to contact."

"It's very informative and exciting to consider all of the post-college opportunities available to UI students."

"I liked the variety of employers. The atmosphere was very professional, and it was a great experience."

Career Fairs

Fall 2015-Spring 2016

Diversity Networking Event

—Wednesday, September 23

52 students attended
33 employers participated

Fall Job & Internship Fair

—Thursday, September 24

1,494 students attended
180 employers registered

Actuary Science, Insurance & Risk Management Career Fair

—Wednesday, September 30

121 students attended
40 employers participated

Spring Job & Internship Fair

—Wednesday, February 24

1,038 students attended
167 employers registered

Educator Fair

—Friday, April 1

129 students attended
58 districts registered



Courtney Warren

ELEMENTARY EDUCATION, MAY 2016 GRADUATE

"The Pomerantz Career Center at the University of Iowa helps prepare students for life after college unlike any other school in Iowa. With the help of Melissa, my resume was concise, organized and professional. As a result, I was offered an interview, and later a career, with a school district who only saw "me" on paper. I strongly encourage all UI students to take full advantage of the many resources, support and advice offered through the Pomerantz Career Center to make the transition from college to adulthood a smooth one. "



Annual Graduate Survey

The Pomerantz Career Center contacts the recent graduates of five undergraduate colleges of The University of Iowa: Tippie College of Business, College of Liberal Arts & Sciences, College of Education, College of Engineering and College of Nursing. The graduates have an opportunity to complete the survey on the web or through a call center representative upon graduation. Alumni provide several key pieces of outcome information about their employment status. The outcome information tells whether they are:

- Employed and the industry, employer, job title, location and salary
- Continuing education and the level and location
- Not seeking employment and the reason
- Still seeking employment

Annual Graduate Survey

The University of Iowa First Destination Survey Results:

Fall 2015—Summer 2016

Collected by Pomerantz Career Center

Overall First Destination: Undergraduates

These are the results for 3,370 UI graduates out of 4,584 graduates during the period from Fall 2015 through Summer 2016 for the College of Liberal Arts & Sciences, College of Business, College of Engineering, College of Nursing and College of Education.

UNDERGRADUATE STUDENTS	SUCCESS RATE	SEEKING
F/P Employment (2,423/3,370)	71.9%	
Continuing Education (666/3,370)	19.7%	
Not Seeking Employment (99/3,370)	2.9%	
Seeking Employment (182/3,370)		5.4%
Total†	94.6%	5.4%

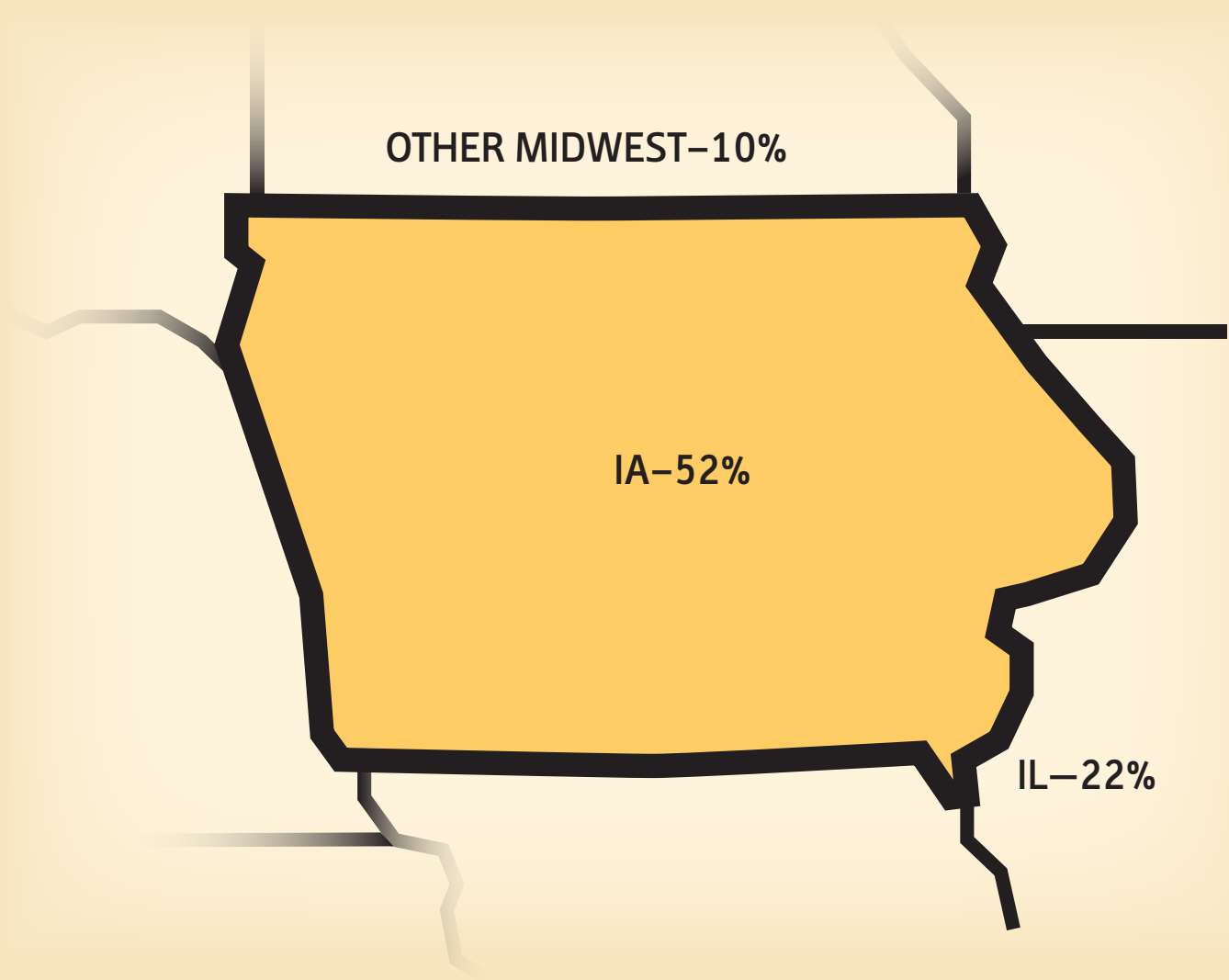
AVERAGE SALARY = \$45,430

MEDIAN SALARY = \$44,000

† Total may not add up to 100% due to rounding off; College of Nursing and Education does not graduate students in summer semester.

JOB OFFERS ACCEPTED BY GEOGRAPHIC LOCATION

States/Regions for reporting 2,247 UI Graduates Employed



- Iowa—**52%**
- Illinois—**22%**
- Other Midwest: Indiana, Kansas, Michigan, Minnesota, Missouri, Nebraska, North Dakota, Ohio, South Dakota, Wisconsin—**10%**
- **MIDWEST REGION TOTAL –83.0%**
- East—Connecticut, Delaware, District of Columbia, Maine, Maryland, Massachusetts, New Hampshire, New Jersey, New York, Pennsylvania, Rhode Island, Vermont—**2%**
- West—Alaska, California, Hawaii, Idaho, Montana, Nevada, Oregon, Utah, Washington, Wyoming—**3%**
- Southwest—Arizona, Colorado, New Mexico, Oklahoma, Texas—**4%**
- South: Alabama, Arkansas, Florida, Georgia, Kentucky, Louisiana, Mississippi, North Carolina, South Carolina, Tennessee, Virginia, West Virginia—**3%**
- International (All other countries, including US territories, other than the US & D.C.)—**2%**
- Unknown (No country reported)—**2%†**

Annual Graduate Survey

Tippie College of Business:

The response rate for the Tippie College of Business was 663 out of 840 graduates.

UNDERGRADUATE STUDENTS	SUCCESS RATE	SEEKING
F/P Employment (555/663)	83.7%	
Continuing Education (77/663)	11.6%	
Not Seeking Employment (13/663)	1.9%	
Seeking Employment (18/663)		2.7%
Total†	97.3%	2.7%

AVERAGE SALARY = \$48,447

MEDIAN SALARY = \$49,000



College of Education:

The response rate for College of Education was 140 out of 174 graduates.

Note: Those students who are counted as graduates from the College of Education are in turn recommended by the College of Education for teaching licensure in their respective state and receive their degree through the College of Liberal Arts & Sciences.

UNDERGRADUATE STUDENTS	SUCCESS RATE	SEEKING
F/P Employment (117/140)	83.6%	
Continuing Education (7/140)	5%	
Not Seeking Employment (3/140)	2.1%	
Seeking Employment (13/140)		9.3%
Total†	90.7%	9.3%

AVERAGE SALARY = \$39,486

MEDIAN SALARY = \$38,590

College of Engineering:

The response rate for College of Engineering was 286 out of 373 graduates.

UNDERGRADUATE STUDENTS	SUCCESS RATE	SEEKING
F/P Employment (219/286)	76.6%	
Continuing Education (47/286)	16.4%	
Not Seeking Employment (2/286)	.7%	
Seeking Employment (18/286)		6.3%
Total†	93.7%	6.3%

AVERAGE SALARY = \$60,503

MEDIAN SALARY = \$60,000

† Total may not add up to 100% due to rounding off; College of Nursing and Education does not graduate students in summer semester.



Annual Graduate Survey

College of Liberal Arts & Sciences:

The response rate for College of Liberal Arts & Sciences was 2,112 out of 3,011 graduates.

UNDERGRADUATE STUDENTS	SUCCESS RATE	SEEKING
F/P Employment (1,372/2,112)	65%	
Continuing Education (529/2,112)	25%	
Not Seeking Employment (80/2,112)	3.8%	
Seeking Employment (131/2,112)		6.2%
Totals†	93.8%	6.2%

AVERAGE SALARY = \$38,156

MEDIAN SALARY = \$36,000

College of Nursing:

The response rate for College of Nursing was 169 out of 197 graduates.

UNDERGRADUATE STUDENTS	SUCCESS RATE	SEEKING
F/P Employment (160/169)	94.7%	
Continuing Education (6/169)	3.6%	
Not Seeking Employment (1/169)	.6%	
Seeking Employment (2/169)		1.2%
Totals†	98.8%	1.2%

AVERAGE SALARY = \$52,752

MEDIAN SALARY = \$52,000

† Total may not add up to 100% due to rounding off; College of Nursing and Education does not graduate students in summer semester.

Fortune 500 Companies Hiring UI Students in 2015-2016

- Abbott Laboratories
AbbVie
Aflac Incorporated
AGCO Corporation
Alphabet
Altria Group
Amazon.com
Ameriprise Financial
Anthem
Aramark
Archer-Daniels-Midland Company
Arthur J. Gallagher & Co.
Bank of America Corporation
Baxalta Incorporated
Baxter International
Best Buy Co.
C. H. Robinson Worldwide
Casey's General Stores
Caterpillar
CDW Corporation
CIGNA Corporation
ConAgra Foods
Costco Wholesale Corporation
CVS Health Corporation
Deere & Company
Discover Financial Services
DISH Network Corporation
Dollar Tree
EMC Corporation
FedEx Corporation
First American Financial Corporation
General Electric Company
General Mills
- Genesis Healthcare
Hormel Foods Corporation
HP
J.C. Penney Company
JPMorgan Chase & Co.
Kellogg Company
Kohl's Corporation
Liberty Mutual Holding Company
Lockheed Martin Corporation
Marriott International
Massachusetts Mutual Life Insurance Company
McDonald's Corporation
Monsanto Company
Motorola Solutions
Mutual of Omaha Insurance Company
Nationwide Mutual Insurance Co.
Navistar International Corporation
New York Life Insurance Company
Nordstrom
Norfolk Southern Corporation
Northrop Grumman Corporation
Northwestern Mutual Life Insurance Company
Oracle Corporation
Pacific Life
PepsiCo
Pfizer
Principal Financial Group
- Prudential Financial
Rockwell Automation
Rockwell Collins
St. Jude Medical
Starbucks Corporation
State Farm Insurance Cos.
State Street Corporation
Stryker Corporation
Supervalu
Target Corporation
The Allstate Corporation
The Goldman Sachs Group
The Kraft Heinz Company
The Procter & Gamble Company
The Sherwin-Williams Company
The Walt Disney Company
Thermo Fisher Scientific
Tyson Foods
Union Pacific Corporation
United Continental Holdings
United Parcel Service
UnitedHealth Group Incorporated
US Foods Holding Corp.
Verizon Communications
Voya Financial
W.W. Grainger
Walgreens Boots Alliance, Inc.
Wal-Mart Stores
Wells Fargo & Company





The University of Iowa
Marvin A. and Rose Lee
Pomerantz Career Center

[Click here](#) to access the
Pomerantz Career Center
Staff

Pomerantz Career Center
100 Pomerantz Center,
Suite C310
Iowa City, Iowa 52242

319-335-1023
www.careers.uiowa.edu

Top Full-Time Hiring Employers 2015-2016

7G Distributing	Cottingham & Butler	Hon	Nationwide Insurance	Target
ACT	Coyote Logistics	Hy-Vee	Neighborhood Centers of Johnson	TaxAct
Aerotek	Deloitte	IBM	County	TEKsystems
Aflac	Echo Global Logistics	Insight Global	Northwestern Memorial Hospital	The University of Iowa
Amazon	Edward Jones	Integrated DNA Technologies	Northwestern Mutual	Toyota Financial Services
AmeriCorps	EKS&H	Iowa City Community School District	Northwestern University	Transamerica
Ann & Robert H. Lurie Children's Hospital	Enterprise Holdings	JET Program	Pariveda Solutions	U.S. Air Force
Bank of America Merrill Lynch	Enterprise Rent-A-Car	John Deere	PepsiCo	U.S. Army
Billion Automotive	Epic	Kforce Inc.	Principal Financial Group	U.S. Bank
BMO Harris Bank	Ernst & Young	Kraft-Heinz	PwC	UI Hospitals and Clinics
Bread Garden Market	Fast Enterprises	Lutheran General Hospital	Robert Half	United Airlines
Businesolver	GEICO	Make-A-Wish	Rockwell Collins	United Fire Group
C.H. Robinson	Genesis Health Systems	Mayo Clinic	RSM	UnityPoint Health
Cedar Rapids Community School District	Google	Medtronic	Scheels	UpRight Law
Cerner	Groupon	Mercy Medical Center	Sedgwick	Vanguard
Cigna	Guaranteed Rate	Mercy Medical Center North Iowa	Shive-Hattery	VelocityEHS
City of Coralville	hibu	Meredith Corporation	Siemens	Wells Fargo
Clear Creek Amana School District	Hills Bank	MidWestOne Bank	Stryker	West Liberty Community School District
College Community School District	HNI	Morningstar	Systems Unlimited	Yelp
	Holmes Murphy & Associates	Muscatine Community School District	Tanager Place	

The University of Iowa prohibits discrimination in employment, educational programs, and activities on the basis of race, national origin, color, creed, religion, sex, age, disability, veteran status, sexual orientation, gender identity, or associational preference. The University also affirms its commitment to providing equal opportunities and equal access to University facilities. For additional information, contact the Office of Equal Opportunity and Diversity, (319) 335-0705.