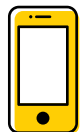
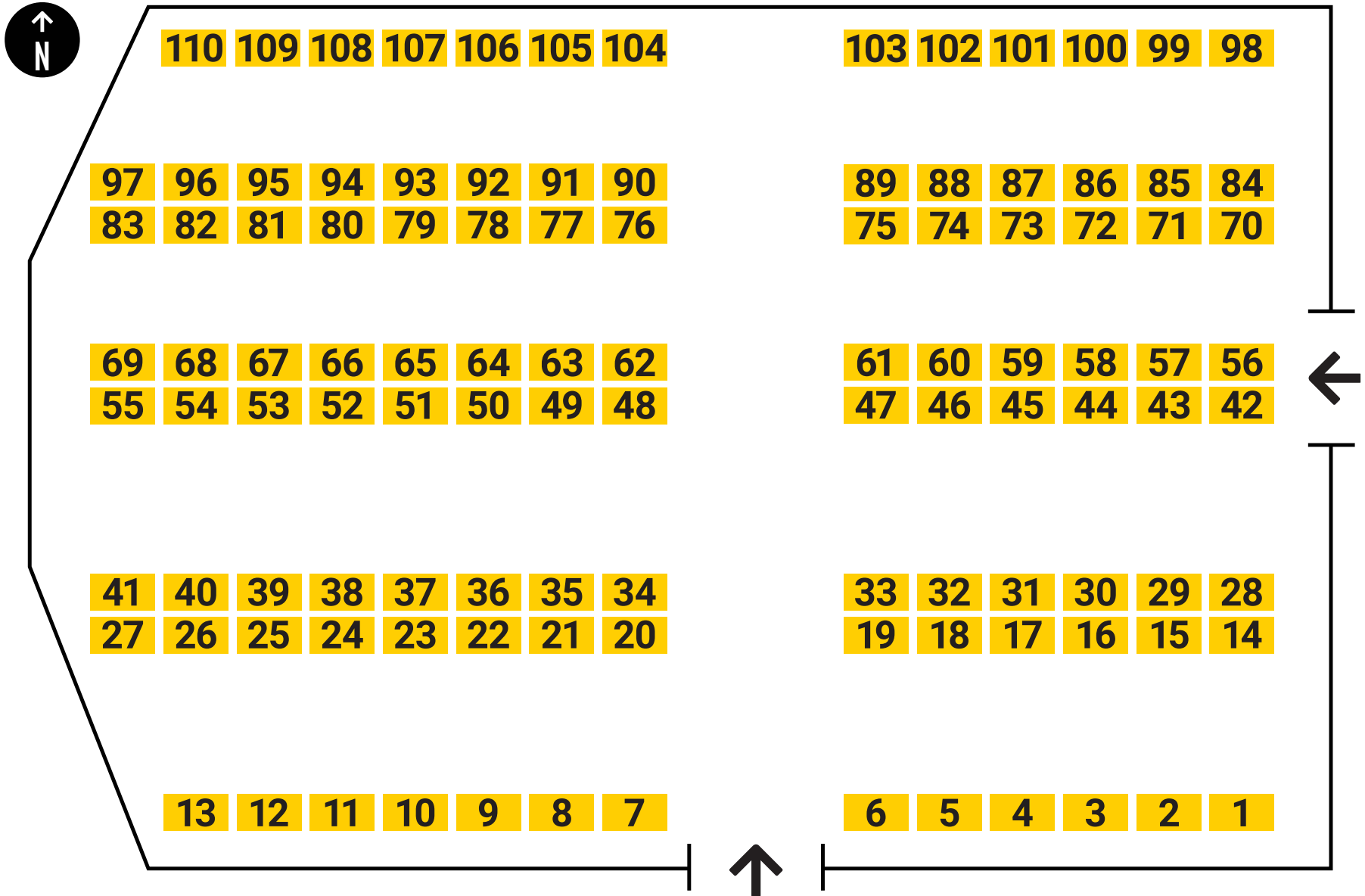


# MAIN LOUNGE



MOST UP-TO-DATE INFORMATION ON *Handshake*



Download on the  
App Store

GET IT ON  
Google Play

# MAIN LOUNGE

✱ = Black & Gold Partner

| ORGANIZATION   | TABLE     |
|--|-----------|
| 3E   | 1         |
| ABC Supply Co. Inc.  | 2         |
| Abstrakt Marketing Group                                   | 3         |
| AccessDubuqueJobs.com                                      | 10        |
| Agilent Technologies                                       | 11        |
| Airgas   | 12        |
| <b>ALDI USA*</b>   | <b>6</b>  |
| Amana Society, Inc.  | 13        |
| Arrive Logistics   | 14        |
| Avenue Logistics   | 15        |
| Beacon Hill Staffing Group                                 | 16        |
| Berkshire Sports Academy                                   | 23        |
| Boy Scouts of America, Hawkeye Area Council                | 24        |
| Buckle   | 25        |
| Cambridge  | 26        |
| CDPC Sales Team - Nashville                                | 27        |
| City of Peoria - Police Department                         | 28        |
| City Year  | 29        |
| <b>Clickstop*</b>  | <b>5</b>  |
| CliftonLarsonAllen LLP                                     | 30        |
| Consolidated Electrical Distributors, Inc. - Mid-Continent | 31        |
| Co-op Solutions  | 32        |
| <b>Cottingham &amp; Butler*</b>                            | <b>4</b>  |
| Creative Planning  | 33        |
| D.R. Horton, Inc.  | 34        |
| Dayton Freight   | 35        |
| Echo Global Logistics                                      | 36        |
| Eide Bailly LLP  | 37        |
| Eight Eleven Group   | 38        |
| Eldon C. Stutsman, Inc.                                    | 39        |
| EMC Insurance Companies                                    | 40        |
| <b>ENGIE North America Inc.*</b>                           | <b>9</b>  |
| <b>Enterprise Mobility*</b>                                | <b>21</b> |
| Epic   | 41        |
| Fareway Stores, Inc.                                       | 42        |
| Federal Deposit Insurance Corporation                      | 43        |

| ORGANIZATION  | TABLE         |
|---|---------------|
| Filtration Group                                    | 44            |
| Freund-Vector Corporation                           | 45            |
| Goosehead Insurance                                 | 46            |
| Graco Inc.  | 47            |
| Great Lakes Industrial                              | 48            |
| Great River Health                                  | 49            |
| GreatAmerica Financial Services                     | 50            |
| Greenix Pest Control                                | 51            |
| GreenState Credit Union                             | 52            |
| Guidepoint  | 53            |
| Harrison Group, Inc.                                | 54            |
| HIBU  | 55            |
| <b>HNI Corporation*</b>                             | <b>7, 8</b>   |
| Hormel Foods Corporation                            | 56            |
| Illinois Department of Children and Family Services | 57            |
| <b>Insight Global*</b>                              | <b>22</b>     |
| Iowa 80 Group, Inc/CAT Scale                        | 58            |
| Iowa Department of Health and Human Services        | 59            |
| Iowa Department of Revenue                          | 60            |
| Iowa Division of Banking                            | 61            |
| Jackson Physician Search                            | 62            |
| Jetro Restaurant Depot                              | 63            |
| Johnson County Sheriff's Office                     | 64            |
| Kunkel & Associates, Inc.                           | 65            |
| Leepfrog Technologies, Inc.                         | 66            |
| Mau Marine, Inc/Okoboji Store Bar & Kitchen         | 67            |
| Mayo Clinic   | 68            |
| Menard, Inc.  | 69            |
| MoLo Solutions                                      | 70            |
| Musco Sports Lighting, LLC                          | 71            |
| National Indemnity Company                          | 72            |
| Nationwide  | 73            |
| North Risk Partners                                 | 74            |
| Northwestern Mutual - Chicago                       | 17            |
| <b>Northwestern Mutual - Eastern Iowa*</b>          | <b>18, 19</b> |
| Office of Auditor of State, State of Iowa           | 75            |
| Palmer Group  | 76            |

| ORGANIZATION  | TABLE     |
|---|-----------|
| Parks Marina  | 77        |
| Pella Corporation   | 78        |
| PepsiCo   | 79        |
| Perspective Therapeutics  | 80        |
| Quad - Corporate Trainee Program  | 81        |
| Rainbow Companies   | 82        |
| RHM Staffing Solutions  | 83        |
| River's Edge Hospital and Clinic  | 84        |
| RSM US LLP  | 85        |
| Schneider   | 86        |
| Sedgwick  | 87        |
| Sherwin-Williams Company - Paint Stores Group   | 88        |
| SitusAMC  | 89        |
| Southwestern Advantage  | 90        |
| Spotlight   | 91        |
| SRS Distribution  | 92        |
| Streck  | 93        |
| Stride Autism Centers   | 94        |
| Techtronic Industries, NA (TTI) - TTI Power Equipment                                     | 95        |
| The Hershey Company   | 96        |
| The Hill Group  | 97        |
| The University of Iowa - Office of the Vice President for Research and State Hygienic Lab | 98        |
| Transamerica  | 99        |
| U.S Army Contracting Command-Rock Island, IL  | 100       |
| U.S. Army and Army Reserve (Iowa City Recruiting Company)                                 | 101       |
| UFG Insurance   | 102       |
| UHY LLP   | 103       |
| <b>Uline*</b>   | <b>20</b> |
| Universal Industries, Inc.  | 104       |
| US Navy   | 105       |
| Vera French Community Mental Health Center  | 106       |
| Vivint  | 107       |
| Von Maur  | 108       |
| Walgreens   | 109       |
| WorkInAmes.com  | 110       |



# INTERNATIONAL BALLROOM (2<sup>ND</sup> FLOOR)

| ORGANIZATION  | TABLE |
|---|-------|
| The Arc of Southeast Iowa                             | 111   |
| AT&T  | 112   |
| Americans for Prosperity                              | 113   |
| Balance Autism  | 114   |
| BHE Renewables  | 115   |
| Camp Fire Heart of Iowa                               | 116   |
| Camp Horseshoe  | 117   |
| Cedar Rapids Independent Filmmakers                   | 118   |
| Community & Family Resources                          | 119   |
| Easterseals Wisconsin Camps                           | 120   |
| Fifth District Department of Correction Services      | 121   |
| Globe Life Family Heritage: Tuma Agencies             | 122   |
| Green Pest Management                                 | 123   |
| Hope Ministries                                       | 124   |
| Internal Revenue Service - Criminal Investigation     | 125   |
| Mahaska Health  | 126   |
| OSF Healthcare  | 127   |
| Principal Financial Group                             | 128   |
| Pulse Technology                                      | 129   |
| Ryan Specialty  | 130   |
| Sanford Health  | 131   |
| Sixth Judicial District Dept of Correctional Services | 132   |
| State of Iowa Executive Branch                        | 133   |
| StoneX Group Inc.                                     | 134   |
| Successful Living                                     | 135   |
| Systems Unlimited, Inc                                | 136   |
| Tanager Place   | 137   |
| U.S. Department of State                              | 138   |
| UCS Healthcare  | 139   |
| Wells Fargo   | 140   |
| Young House Family Services                           | 141   |
| YSS   | 142   |
| U.S. Army Audit Agency                                | 143   |

| GRADUATE PROGRAMS                               | TABLE |
|---|-------|
| University of Iowa - College of Pharmacy        | 144   |
| University of Iowa - College of Law             | 145   |
| University of Iowa - Tippie College of Business | 146   |
| University of Iowa - School of Social Work      | 147   |
| University of Iowa - College of Public Health   | 148   |



**MOST UP-TO-DATE  
INFORMATION ON  
*Handshake***

